

COMMUNITY-BASED MARINE PROTECTED ZONE & CORAL FARM

Objectives:

The implementation of **in-situ coral nurseries** will nurture coral fragments to facilitate the growth and expansion of coral cover in at-risk areas within the lagoon.

The creation of a **Community-based Marine Protected Zone (CMPZ)** to help address overharvesting and anthropogenic degradation on marine ecosystems.

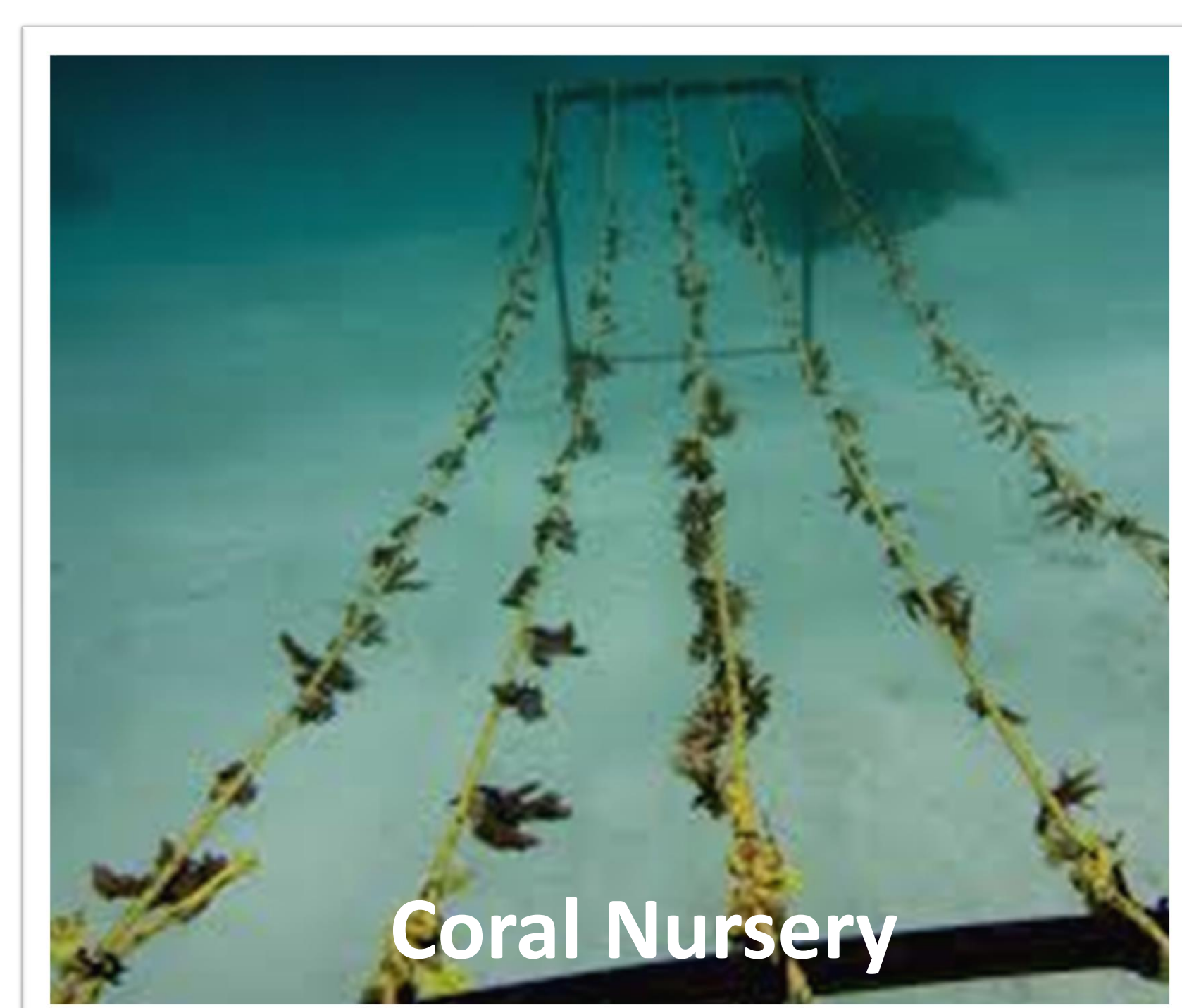
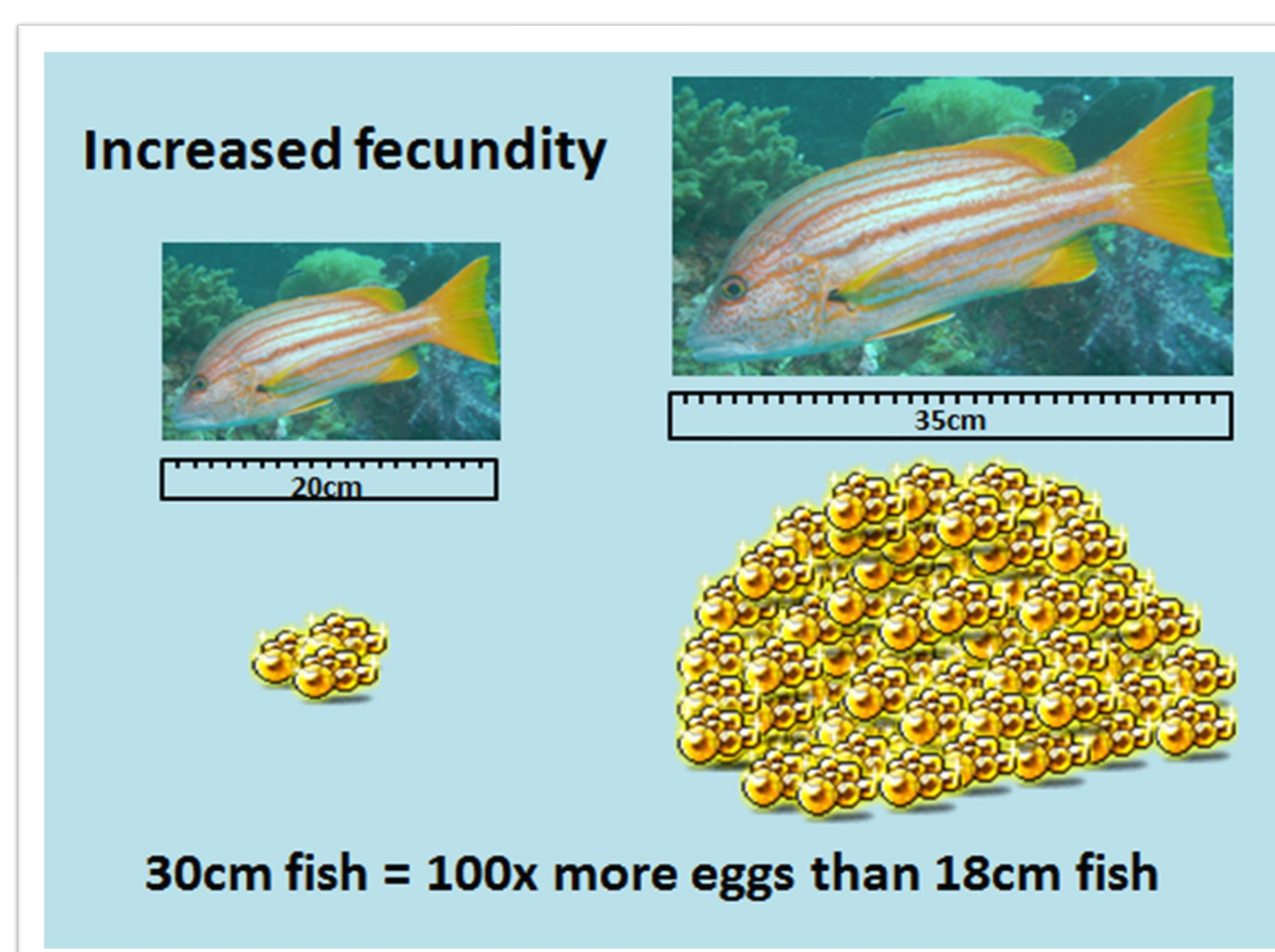


Why are we setting up this CMPZ and coral nursery?

The health of the lagoon is deteriorating. Fish stocks and the abundance and diversity of marine life have decreased and the coral reef is being destroyed due to environmental and anthropogenic stresses.

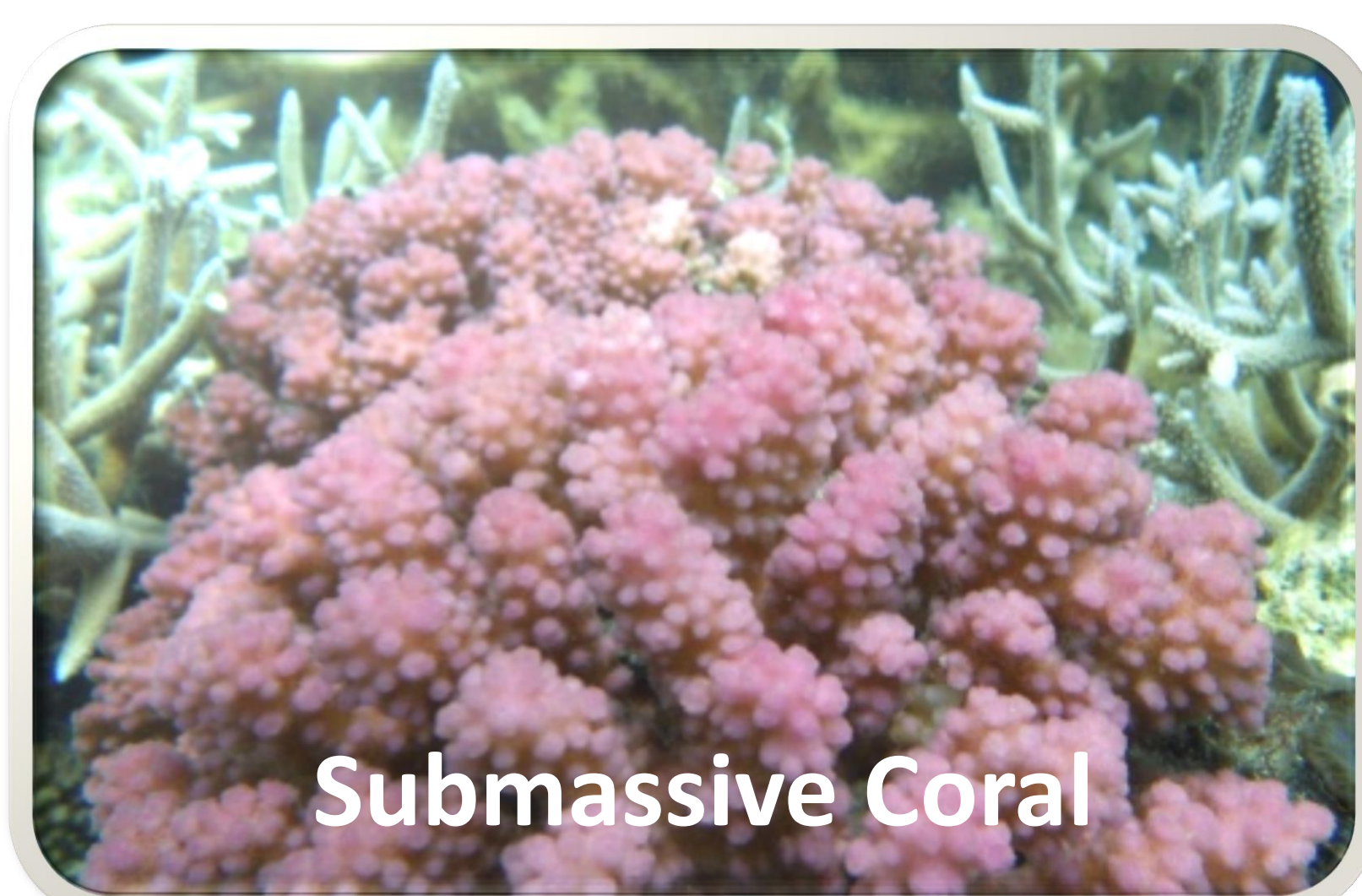
Benefits:

- Increase reproduction, fish size, stock and catch
- Greater abundance of marine life
- Generate more income for the local community
- New opportunities such as eco tourism and boat tours



Coral Nursery:

The coral farm will use the suspended rope technique; this is the least expensive and most manageable method. Coral nurseries will be about of 4 m² and coral fragments of different corals species will be reared and transplanted to the reef. This will restore the coral reef, increase biodiversity and create more habitats for the fish.



Submassive Coral



Corymbose Coral



Digitate Coral



Tabular Coral