



GLOBAL ENVIRONMENT FACILITY

SMALL GRANTS PROGRAMME – LIBERIA

COUNTRY PROGRAMME STRATEGY FOR UTILIZATION

OF OP-5 GRANT FUNDS

COUNTRY PROGRAMME STRATEGY

(January 2011-JUNE 2014)

SGP The GEF
Small Grants
Programme

July 2011

ACRONYMS

BD	-	Biodiversity
CBA	-	Community Based Adaptation
CBD	-	Convention on Biodiversity
CBL	-	Central Bank of Liberia
CBOs	-	Community Based Organizations
CC	-	Climate Change
CI	-	Conservation International
CPS	-	Country Programme Strategy
CSOs	-	Civil Society Organizations
FDA	-	Forestry Development Authority
FSPs	-	Full Size Projects
GBV	-	Gender Based Violence
GDP	-	Gross Domestic Product
GEF	-	Global Environment Facility
KM	-	Knowledge Management
LDCs	-	Least Developed Countries
MEAs	-	Multilateral Environmental Agreements
MDGs	-	Millennium Development Goals
MSPs	-	Medium Size Projects
NAPA	-	National Adaptation Programme Action
NBSAP	-	National Biodiversity Strategy and Action Plan
NC	-	National Coordinator
NECOLIB	-	National Environmental Commission of Liberia
NGOs	-	Non-Governmental Organizations
NIP	-	National Implementation Plan
NSC	-	National Steering Committee
POPs	-	Persistent Organic Pollutants

PRS	-	Poverty Reduction Strategy
SGP	-	Small Grants Programme
SIDCs	-	Small Island Developing Countries
SLM	-	Sustainable Land Management
SNP	-	Sapo National Park
STAR	-	System Transparent Allocation Resource
UNCCD	-	United Nations Convention to Combat Desertification
UNDP	-	United Nations Development Programme
UNEP	-	United Nations Environmental Programme
UNFCCC	-	United Nations Framework Convention on Climate Change
WB	-	World Bank
WWF	-	World Wide Funds

TABLE OF CONTENTS

ACRONYMS.....	2-3
Table of Content	4
1. SGP Country Programme.....	5
1.1 SGP Liberia’s Achievement.....	6
1.2 Key Baseline for the Country Programme Strategy	7
2. SGP Country Programme niche	8
2.1 List or relevant conventions (Rio Conventions) and national/regional plans or programee8	
2.2 OP-5 Resource support to implementation of National Priorities.....	8
2.3 Liberia’s Conservation Map.....	8
2.4 OP-5 Objectives of national Priorities	9-10
3. Capacity development, poverty reduction and gender results for SGP.....	10
3.1 SGP projects review and implementation	10-11
4. OP-5 Country Outcomes, indicators and activities.....	11
5. Monitoring & Evaluation Plan.....	12-13
5.1 Monitoring & Evaluation plan.....	13
5.2 Local participation in the Monitoring & Evaluation	13
5.3 Strategy for aggregating SGP projects in CPS.....	13
6. Knowledge Management Plan.....	14
6.1 Capturing, sharing and disseminating lessons learned.....	14-17
6.2 SGP Country Programme knowledge management policy.....	18
6.3 SGP Country Programme knowledge replication policy	18
7. Resource Mobilization.....	19
7.1 SGP Resource Mobilization Plan.....	19
7.2 SGP Country Programme partnerships with other donors.....	19
8. Annex.....	19-26

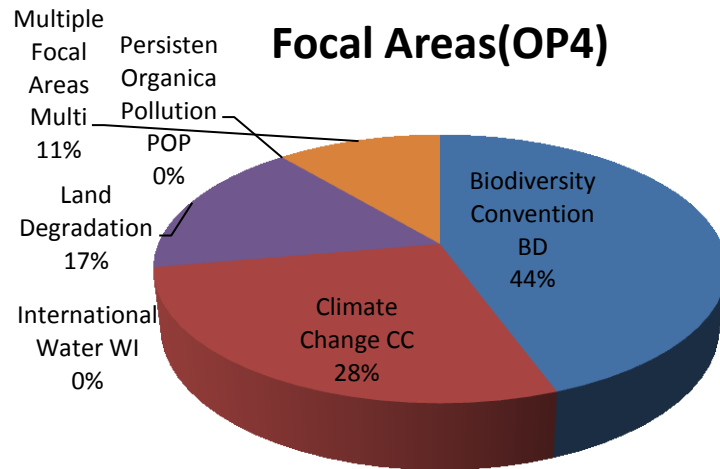
1. SGP Country Programme

The Global Environment Facility (GEF) Small Grants Programme (SGP) is a global funding mechanism that supports community level initiatives that promote sustainable economic growth and social development within the GEF focal areas. The programme started in 2008 and operates under the United Nations Development Programme (UNDP) Country Office in Liberia. It integrates poverty reduction and Millennium Development Goals (MDGs) as critical entry point in environmental management and human development. It operates on the ideal that global environmental problems are best solved if the community people affected by the problems are involved and can derive direct benefits and control the process.

During this operational period (GEF-4), a total of US\$465,000 liquid cash with \$ 350,000 from the GEF core funds, \$ 115,000 from UNDP's core and in-kind contribution with cash value of over \$100,000 were committed to 18 projects implemented by Nongovernmental Organization (NGO) and Community Based Organizations(CBO). A total of 60 villages with a population close to 150,000 were positively impacted by these projects. Besides the core objective of achieving global environmental benefits through the implementation of these Projects, key concentration was also on addressing livelihoods and income generation Initiatives all gear toward providing alternative sources of income and protein for local population. The overall delivery rate of these projects is within the neighborhood of 80-90 percent on the general level. However, four are especially singled out for their high achievement of global environmental benefits on one hand, and addressing issues of poverty, alternative livelihoods and income generation on another hand. These include fish pond and cattle rearing project in support of the biodiversity project focusing on Pig hippo conservation project in River Gee and Grand Gedeh Counties, The cane rat multiplication and honey bees projects within the proximity of the East Nimba Nature Reserve in Nimba County , the sustainable agriculture (lowland farming) in the Wologizi mountain range and the animal husbandry projects in Lofa County.

During the OP4- projects approved and implemented are summarized in table 1 and depicted in Figure 1.

Focal Area Geographic Area	Biodiversity Convention BD	Climate Change CC	International Water IW	Land Degradation	Persistent Organic Pollutants POP	Multiple Focal Areas Mult.	Total
High Forest Ecosystem	5	2	0		0		7
Coastal Savannah		1	0	2	0	2	5
Tropical Savannah	1	1	0	1	0		3
Mid mountain	2	1	0		0		3
Total	8	5	0	3	0	2	18
Percent							



1.2 Key Baseline for the Country Programme Strategy

Biologically, Liberia is exceptionally diverse, with high rates of endemism and high population of species that are nearly extinct outside the country. Liberia is home to approximately 125 mammal species, 590 bird species, 162 native fish species, 74 unknown reptiles and amphibians and over 1000 described insect species (Desk Study UNEP 2004). In 1999, the West African Conservation Priority Setting Exercise for the Upper Guinean Ecosystem funded by the Global Environment Facility, identified Liberia as by far the top priority country in humid West Africa for conservation.

With 4.52 million hectares of tropical rainforest, today, Liberia holds the greatest remaining portion of the Upper Guinea Forest Ecosystem (42%), within the Guinea Forest Hotspot of West Africa. This hotspot extends along the West African coast from Guinea to Cameroon and is one of thirty-five (35) critical areas for global biodiversity conservation (Myer et al. 2000). Forests in this region have been reduced to an estimated 14.3 % of their original size.

Liberia is located in the Upper Guinea Forest Region of West Africa, spans an area of 111,370 km². It lies between the longitudes of 7⁰ 30' and 11⁰ 30' west and latitudes 4⁰ 18' and 8⁰ 30' north. Liberia is neighbored by Sierra Leone to the west, Guinea to the north and Cote d'Ivoire east. Situated on the coast of West Africa, Liberia has 579 Km² of the Atlantic coastline.

Liberia's Country Programme Strategy (CPS) for OP-5 is being updated to support non-governmental organizations and Community-Based Organizations (CBOs) to build capacities and provide funds for management of natural resources both within the protected areas and the buffer zone; conservation in productive countryside; productive uses of renewable energy that are environmentally sound; innovative demonstrations and capacity building work in sustainable land management practices and innovative capacity building in cost effective technologies in eliminating Persistent Organic Pollutants (POP) in focal areas.

In addition, the OP-5 strategic programme will seek to reconcile global environmental goals with Poverty Reduction Strategy and work towards achieving the Millennium Development Goals (MDGs) to improve the income generating capacity of the vulnerable population there by contributing to the Poverty Reduction Strategy effort of Liberia. Utilization of community protected areas within the biological hot-spots outside the gazetted forest reserves.

The programme will further develop indicators to measure progress or success in projects implementation looking GEF's strategic goal. The programme replicate SGP success stories and help to influence policy reforms that gear towards sustainable environmental management.

MATRIX OF SOURCES FOR CO-FINANCING OR INDICATIVE FUNDS

Fund source	Operational Phrase			Total
	OP-5 Yr. 1	OP-5 Yr. 2	OP 4 Yr. 3	
GEF Core	500,000.00	500,000.00	200,000.00	1,200,000.00
GEF-GOL-STAR	350,000.00	350,000.00	350,000.00	1,050,000.00
UNDP- Liberia	150,000.00	150,000.00	150,000.00	450,000.00
Other GEF partners	-0-	150,000.00	150,000.00	300,000.00
Government of Liberia	50,000.00	50,000.00	50,000.00	150,000.00
In-Kind Contribution From NGOs and CBOs	20,000.00	20,000.00	20,000.00	60,000.00
TOTAL	1,070,000.00	1,220,000.00	920,000.00	3,210,000.00

2.0 Ratification of the Rio Conventions

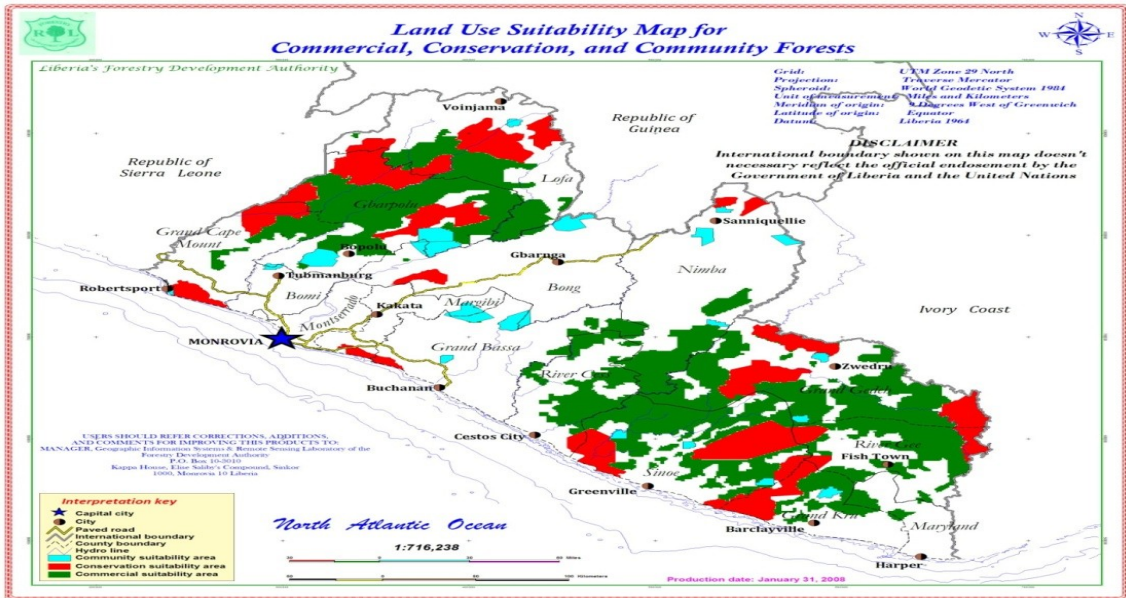
Table 1 List of relevant conventions and national/regional plans programmes

Rio Conventions + national planning frameworks	Date of ratification/completion
UN Convention on Biological Diversity (CBD)	2000
CBD National Biodiversity Strategy and Action Plan (NBSAP)	2004
UN Framework Convention on Climate Change (UNFCCC)	2002
UNFCCC National Communications (1 st , 2 nd , 3 rd)	It started 2006 and ongoing
UNFCCC Nationally Appropriate Mitigation Actions (NAMA)	Currently- Underway
UN Convention to Combat Desertification (UNCCD)	1998
UNCCD National Action Programmes (NAP)	Finalized 2011
Stockholm Convention (SC)	2002
SC National Implementation Plan (NIP)	2007
World Bank Poverty Reduction Strategy Paper (PRSP)	June, 2008
GEF National Capacity Self-Assessment (NCSA)	July, 2006
GEF-5 National Portfolio Formulation Exercise (NPFE)	n/a

2.2 OP5 RESOURCE WILL SUPPORT NATIONAL PRIORITIES IN RELATION TO GEF5 STRATEGIC PRIORITIES

The mode to facilitate and coordinate resources under OP5 will be multinational including participatory approach to capacitate NGOs & CBOs to manage project consistent with national priorities and global environmental objectives in the four focus areas: Conserving biodiversity, climate change mitigation and adaptation, sustainably managing lands and cost effective elimination of POPs. Activities that will be attention include integrated biodiversity conservation involving alternative livelihood initiatives within communities at the fringes of protected areas, energy efficient eco-stoves, community woodlot, lowland farming, reforestation and afforestation, capacity building for the removal of the substances and public awareness to influence national policy on POPs. Furthermore, all SGP funded projects will influence national policies and priorities. This will be done in line with existing enabling activities such as NAPA, NBSA, NAP,NIP etc.

2.3:



2.4: OP5 Objectives of National Priorities

OP5 OBJECTIVES	National Priorities	SGP
<p><u>SGP OP5 Immediate Objective 1</u> Improve sustainability of protected areas and indigenous and community conservation areas through community-based action.</p>	Conservation of biodiversity at the in-situ level, sustainable use, livelihood initiatives to reduce poverty within communities at the fringes of protected areas,	Capacity building, conservation enhance community level, issue of forest dwellers,
<p><u>SGP OP5 Immediate Objective 2</u> Mainstream biodiversity conservation and sustainable use into production landscapes, seascapes and sectors through community initiatives and actions</p>	Mainstreaming biodiversity conservation into development programmes and policies	Biodiversity conservation issues highlighted at the community level, sustainable livelihood initiatives undertaken
<p><u>SGP OP5 Immediate Objective 3</u> Promote the demonstration, development and transfer of low carbon technologies at the community level</p>	Mainstreaming climate change mitigation and adaptation into national development policies and programmes	Local capacity build to undertake initiatives lead to sustainable harvest at the community level
<p><u>SGP OP5 Immediate Objective 4</u> Promote and support energy efficient, low carbon transport at the community level</p>	Mainstreaming climate change mitigation and adaptation	Awareness raising on Climate change issues at local, national and policy levels
<p><u>SGP OP5 Immediate Objective 5</u> Support the conservation and enhancement of carbon stocks through sustainable management and climate proofing of land use, land use change and forestry</p>	Mainstreaming REDD+ issues to national development with emphasis on land use	Build the resilience of local communities to with stand the impacts of climate change and build capacity adaptation
<p><u>SGP OP5 Immediate Objective 6</u> Maintain or improve flow agro-ecosystem and forest ecosystem services to sustain livelihoods of local communities</p>	National food security issues in climate change mitigation programmes at national level	Ensure sustainable livelihood initiatives undertaken
<p><u>SGP OP5 Immediate Objective 7</u> Reduce pressures at community level from competing land uses in the wider landscapes</p>	Land tenure and policy develop	Reduce land related conflicts at the community level thereby enhancing conservation activities at the local level
<p><u>SGP OP5 Immediate Objective 8</u> Support trans-boundary water body management with community-based initiatives</p>	Development national policy on trans-boundary water bodies	Assist or influence the development of national policy on trans-boundary water bodies

<u>SGP OP5 Immediate Objective 9</u> Promote and support phase out of POPs and chemicals of global concern at community level	Undertake inventory of POPs and Pesticides in urban centers and industrial areas	Provide technical support to for the phase out of hazardous chemicals and pesticides at the community level
<u>SGP OP5 Immediate Objective 10</u> Enhance and strengthen capacities of CSOs (particularly community-based organizations and those of indigenous people to engage consultative processes, apply knowledge management to ensure adequate information flow, implement conservation guidelines, and monitor and evaluate environmental impacts and trends	Establishment of Knowledge management network	Establishment of environmental NGOs resource center to build capacity for local NGOs
<u>Cross Cutting Results:</u> Poverty reduction, livelihoods and gender	PRS I & II	Local level interventions for sustainable livelihoods, and mainstreaming gender at community level initiatives

3.1 The selection of projects' focus and implementation is influenced by local priority for intervention in any of the focus areas under the Country Programme Strategy (CPS) for achieving global environmental benefits and improving livelihoods as well as local benefits. This mean project idea is generated base on issues unique to the local situation instead of be imposed from the Country Programme Strategy level. This approach give confident to the locals that they own and are leading the process to solve the problem leading to the achievement of global environmental benefits and providing opportunities for alternative livelihoods to address poverty through the use of CBOs and NGOs that transform projects ideas into actions by use of local actors to deal with the situation. The role of the SGP in the process is to use its technical knowhow to transform project ideas generated at the local level into full fledge proposals and train the personnel of the organizations undertaking the initiative In project implementation circle which include report preparation, monitoring and evaluation among others.

The second level is ensuring that project staff is dominated by personnel native to the communities where the intervention is been undertaken and core staff of NGO & CBO undertaking the intervention. The CPS makes it requirement, that project staff selection is gender sensitive with female selection given preferential consideration. This strategy does not only accelerate local capacity development but ensure that capacity developed during the project circle is retained to advance the process of sustaining the intervention when the SGP phase out funding. It further ensures that females are equally capacitated to fully participate in the process as the leadership and decision making levels.

4. OP5 Country outcomes, indicators and activities

Objective 5 Sustainability of SGP				
Project strategy	Verifiable Indicator		Sources	Assumption
	Indicator	Target		
Outcome I				
Country Programme handling large portfolio aside of core GEF funding after OP5	number of projects undertaken increased and completed within time	By end of OP5 operational period	GEF database, projects' reports and monitoring reports	Funding arrangement outside of GEF core funding almost equal or surpass core funding
OUTPUTS	ACTIVITIES			
NC/NSC/NGOs/CBOs Capacities of mentioned groups, organizations built	<ol style="list-style-type: none"> 1.undertake capacity needs assessment of target groups 2.Design appropriate interventions and field test; 3.mobilize the needed financial resources for the interventions 4.carry out the appropriate interventions 			
Develop mechanism/strategy for resource mobilization	<ol style="list-style-type: none"> 1. Develop country programme business model using non-GEF funding 2. Pilot projects to test business model 3. Conduct SWOT analysis on country programme 4. Evaluate business model performance 			
Institutional development of country programme in line with national development priorities	<ol style="list-style-type: none"> 1. Strengthening SGP programme delivery capacity 2. Align SGP with other donor programmes and explore more avenues for sourcing funding at national level 3. Building the capacity of SGP grantees to enable them explore independent sources of funding outside of the country programme arrangement 			
Develop SGP marketing capacity	<ol style="list-style-type: none"> 1. Conduct training for SGP grantees in marketing strategies and financial management 2. Train SGP grantees in quality control of produce 3. Explore the possibility of marketing SGP's products at external level 4. Design appropriate micro finance programme with non-GEF funding 			

Objective 6 Resource mobilization				
Project strategy	Verifiable Indicator		Sources	Assumption
	Indicator	Target		
Outcome I				
Strengthening partnership with bilateral/multilateral organizations, concessionaires, foreign missions,	number PCAs and other forms of agreements signed	At least 15 PCAs signed to meet co-financing requirement of the GEF-in OP5	GEF database, projects' reports and monitoring reports	Targeted institutions/organizations will earmarked programmes and resources to be tapped by the SGP

government, local communities to develop sourcing funding strategy				
Objective 7 Capacity Building				
Project strategy	Verifiable Indicator		Sources	Assumption
	Indicator	Target		
Outcome I				
Building capacity for local NGOs,CBOs,to implement GEFable projects at the community level	Increased number of NGOs, CBOs accessing GEF funding and with success in implementation recorded	At least sizeable of number of NGOs, CBOs targeted in OP5	GEF database, projects' reports and monitoring reports	NGOs, CBOs playing active role in sustainable development initiatives and decision-making increased

Objective 8 Knowledge Management				
Project strategy	Verifiable Indicator		Sources	Assumption
	Indicator	Target		
Outcome I				
Development of databank on SGP best practice and disseminate information through a network to SGP partners NGOs, CBOs, & local government to inform decision-making	SGP Success stories mainstreamed in national development agenda	Documenting programme impacts on local communities and disseminating information	GEF database, projects' reports and monitoring reports	Projects monitoring will make use of documented SGP best practices by use of website, backup disks etc

5. Monitoring & Evaluation Plan

Table 5 M&E Plan at the Programme Level

SGP Country Programme Level		
M&E	Responsible	Time frame
Country Programme Strategy Review	NSC,NS, CPMT	Start of OP5

Strategic Country Portfolio Review	NSC,NC	Once during
NSC Meetings	NSC, NC UNDP CO	As it may be required
Performance and Results Assessment (PRA) of NC performance	NC, NSC, UNDP CO	Once per year
Country Programme review resulting in Annual Country Report	NC, presenting to NSC and CPMT	Once per year
Financial 4-in- 1 Report	NC/UNOPS	Quarterly

5.2:

Project ideas are generated from the NGOs and CBOs base on interaction with local communities using participatory process such as dialogical and town hall meetings etc. The project governing structure has three level layers- SGP at the country programme level, the NGO/CBO and the local communities. From the concept stage, project preparation, implementation and the phase out, local participation is virtually guarantee all of these aspects including setting project’s objectives, output and activities. Prior to the preparation of the project document, the details of the project idea, objectives, outputs and activities are discussed in town hall meetings to ensure that locals back the idea behind the intervention to increase local support for the project implementation and as well to establish local ownership of the process.

Monitoring of the project will be the duty of the country programme team led by the National Coordinator, members of the National Steering Committee, the Project Management Team compose of the Project Manager from the implementing NGO or CBO, community, women and youth representatives of the host communities on a periodic basis as will be described within the Monitoring and evaluator plan. The result of the monitoring exercise will be documented and discuss in Project Management meeting which include SGP National Coordinator and representatives of the various layers of leadership in the host community. The meeting will recommend changes base on technical and professional consideration as provided for in the monitoring report to improve the management regime of the various projects. Also, document lesson learned during the project implementation to inform future interventions.

6.0 Knowledge Management Plan

The OP-5 strategy for SGP's knowledge management efforts is to document best practices and lessons learned from these interventions, to replicate its successes, and to document and encourage sustainable development policy and practice in Liberia. GEF-OP5 Small Grants Programme seeks to document the knowledge gained to improve the programme delivery effort and to demonstrate the impact of the intervention. It will be based on five pillars: development of information systems to monitor and evaluate the portfolio; analysis and codification of lessons learned through generation of knowledge products and services; knowledge dissemination in complementation with GEFSEC, GEF IA and EA mechanisms, as well as other development and practice; knowledge uptake for application and improvement; and feedback . Knowledge management will be an integral part of the GEF SGP programme to support the creation of global environmental benefits. The OP-5 Country Programme Strategy has therefore planned a progressive approach to knowledge management. Focus activities in the new approach include the following;

7.0 Resource Mobilization Plan

The resource mobilization strategy of the Liberian programme is intended to attract additional funding to complement those coming from the GEF core resources and the System of Transparent Resources (STAR) at the national level from various actors. Value added business; matching funds from SGP grantees and conservation partnership with concessionaires, diplomatic missions accredited to Monrovia etc are earmarked sources for the additional funds anticipated. The Key trust of the strategy is to develop and enhance community capacity to link livelihood activities to interventions in the GEF thematic areas to improve economic potentials in local communities for the achievement of global environmental benefits. The key sources principally are:

1. STAR (system of Transparent Allocation of Resources);
2. Other GEF partners(UNDP Core Resources, World Bank Country Office);
3. Diplomatic missions accredited to Monrovia;
4. National budgetary commitment from the government of Liberia;
5. Marketing of commodities;

6. Livelihood partnership between SGP and concessionaires;
7. Matching funds from grantees;
8. In-Kind contribution;

GEF CORE AND STAR RESOURCES

The principal sources of funding for the Liberian country programme will continue to be relying on the GEF core resources and STAR resources as well. These two, constitute the most reliable sources of funding for the programme.

OTHER GEF PARTNERS

a. UNDP COUNTRY OFFICE CORE RESOURCES

b., WORLD BANK COUNTRY OFFICE

As per the GEF Council's guidance, implementing agencies of the GEF principal (World Bank, UNDP and UNEP) are required to provide in country support for the operational cost of the Small Grant Programme. This includes overhead costs.

Consistent of the Council's guidance, the SGP country resource mobilization strategy targets UNDP and World Bank as institutions to source funds first, for their traditional role as stated. In addition, they are also targeted in the strategy to use the programme as conduit to implement community development and environmental projects that have synergy with the Small Grant Programmes global environmental benefits.

DIPLOMATIC MISSIONS

Like in the case of other least developed countries, embassies of developed countries in Liberia, support wide range of development programmes from national to community development activities. The Liberian programme resource mobilization strategy is seeking to tap on that source of funding. The strategy targets this funding avenue to source funding to support sustainable livelihood ventures in geographical focus areas.

BUDGETORY COMMITMENT FROM GOVERNMENT OF LIBERIA

In furtherance of commitment made to the GEF council which necessitated the coming of the Small Grant Programme to Liberia, the government has obliged herself to support the SGP through budgetary allocation. The government contribution to the cost of implementing the SGP programme will be considered as manifestation of government's desire to take national ownership of the SGP .Funds received from the government through budgetary arrangement will support core activities such as:

1. Providing technical and financial support to CBOs to enable them implement projects within the GEF focal areas. The assistance will range from needs assessment, preparation of project documents, project work and monitoring plans, report writing etc;

2. Partnering with other development and funding organizations and agencies to support programmes intended to improve livelihoods of communities leading to poverty alleviation that eventually contribute to the fulfillment of national commitments and obligations under various MEAs Liberia is a party to;
3. Provision of training for civil society including CBOS in participatory project planning and management, fund raising, budgeting and accounting.
4. Conflict management, gender mainstreaming in community development programmes and sustainable natural resource management;
5. Create Knowledge management network to linking national, and communities organizations to development partners, and other SGP grantees in other parts of the world

STRATEGIC BUSINESS APPROACH (MARKETING OF COMMUNITIES)

Under this pillar of the Liberian programme strategy on generating income from commodities sale, envisions establishing direct or indirect link with local and international markets to sell

Products produced by SGP grantees. The National Coordinator at the initiate stage of this strategy will be in direct control of managing the activities of this arm of the strategy. As time goes by and the capacities of grantees are built, they will take over the scheme and run it on the basis of cooperative incorporating every member of the SGP in the country. From this initiate stage focus of activities will be on:

1. Developing micro finance scheme,
2. Identification of markets (local & international)
3. Packaging of products
4. Preparing packaged products for shipment
5. Building small business enterprise entrepreneur skills of grantees

LIVELIHOOD IMPROVEMENT PARTNERSHIP BETWEEN SGP AND CONCESSIONAIRES

Livelihood improvement partnership between SGP and concessionaires During GEF 5 implementation, will help SGP to mobilize resources to simultaneously address livelihood in concessions operational areas. This effort will be jointly undertaken by the programme and concessionaires. The programme will use its resources and know how to implement programmes or projects that deliver global environmental benefits; whereas funds allocated by concessionaires for community development will use the SGP programme delivery mechanism to address livelihood issues, water and sanitation, micro-finance among others. See table below the matrix of livelihood/environmental issues to be addressed by concessionaires through the use of the programme's mechanism

MATCHING FUNDS

Activities under this strategy will focus on partnering with CBOs, NGOs, and development

organizations with the capacity to generate or source funding and implement programmes of its own to engage joint undertakings. Organizations targeted under this arm of the strategy include the Counties Development Funds (CDF). The strategy envisages tapping into social development funds available to local communities where concessionaires operate. Emphasis will be on the timber industry, the mining sector, the oil exploration and plantations.

IN-KIND CONTRIBUTION

The last of the country programme resource mobilization strategy is the 'In-Kind contribution which conditioned qualifying as grantee on the ability to make in-kind contribution to the project cost. Those in-kind contributions a potentials grantee are expected to have include:

1. Office space,
2. Office Equipment (computers and its accessories);
3. Labor (livelihood related labor costs)

THE GEF SMALL GRANTS PROGRAMME OF LIBERIA GEF-OP5 PROJECT RESULTS INDICATORS

BIODIVERSITY				
OBJECTIVE 1.1 Improve sustainability of protected areas and community forests through community based actions				
Programme Outcome	Objectively verifiable indicators			Assumptions
	Result Indicators	OP5-Targets	Sources of verification	
<p><u>Outcome1.</u> Community-based actions and practices on biodiversity conservation around protected areas, and community forests improved and replicated by other actors.</p>	<ul style="list-style-type: none"> • Number of Traditional Protected Community Resource Management practices identified, documented and strengthened Local capacity for protected area management increased. • Number of GEF-SGP projects in identified environmental corridors and buffer zones • Number of SGP best practices replicated outside the SGP 	<ul style="list-style-type: none"> • 100 Community forests recognized and documented • At least 3 Landscape-level conservation to support environmental corridors, buffer zones around protected areas, important bird areas, wetlands • 15 forest communities get involved in the conservation of two fauna and 8 flora species (endangered) • At least two SGP best practice models 	<ul style="list-style-type: none"> • Project reports and monitoring visits; • Tracking of hectares of PAs and community forests through GEF SGP database 	<ul style="list-style-type: none"> • improved relationship between local communities conservation authorities • GEF SGP influence PA landscapes through replication of best practic,

<p><u>Outcome2:</u> Benefits as a result of conservation initiatives in protected areas and community forests increased</p>	<ul style="list-style-type: none"> • biodiversity managed landscapes increased; • Projects contributing to value added increased (organic, fair trade, etc.) • Number of individuals that demonstrate improved livelihoods based on sustainable use increased 	<ul style="list-style-type: none"> • At least three ecotourism projects developed • At least 8 bio-enterprises established and marketing of NTFPs products increased; • At least 300 families on fringes of PAs and Community forests enjoy improved livelihoods; 	<ul style="list-style-type: none"> • Project reports and monitoring visits • GEF SGP database 	<ul style="list-style-type: none"> • Private sector investment ecotourism increased • increased stakeholders investment in conservation initiatives increased development
<p><u>Outcome3</u> Increased integration of community forests into protected areas network</p>	<p>Conservation status of ecosystems improved & maintained; Project with access and benefit sharing(ABS)mechanisms</p>	<ul style="list-style-type: none"> • knowledge networks firmly established through research partnerships • number of GEF SGP projects apply innovative ABS mechanisms increased 	<ul style="list-style-type: none"> • SGP Database • Project reports and monitoring visits 	<p>Active collaboration of SGP with community level biodiversity increased</p>

BIODIVERSITY

OBJECTIVE 1.1 Improve sustainability of protected areas and community forests through community based actions

Programme Outcome	Objectively verifiable indicators			Assumptions
	Result Indicators	OP5-Targets	Sources of verification	
protected area systems	<p>conservation status</p> <ul style="list-style-type: none"> • Number and hectares of significant ecosystems maintained or improved conservation status 	<ul style="list-style-type: none"> • The conservation of at least 15 endangered and near extinction species maintained • At 20,000 ha of savannah and mountain ecosystem placed under sustainable management with activity community involvement. 	Database SGP	Dissemination of information conservation initiatives increased

<p>Outcome4: Increased understanding and awareness at the community-level of the importance and value of biodiversity</p>	<ul style="list-style-type: none"> • Number of nature clubs in schools and communities registered; Environmental Clubs • Number of natural resource management committees formed in forest communities registered; • Number of locals made aware environmental policies, laws and regulations 	<ul style="list-style-type: none"> • nature clubs in school and communities to increased to 200 ; • 25 additional resource management committees formed in forest communities; • At least the status and conservation of 30 significant ecosystems improved through conservation awareness and education. 	<ul style="list-style-type: none"> • SGP Database • Project reports and monitoring visits • Field observation 	<ul style="list-style-type: none"> • Communities are Prepared to participate in project.
--	--	--	--	---

BIODIVERSITY

OBJECTIVE 1.2 Mainstream biodiversity conservation and sustainable use into production landscapes, through community initiatives

Programme Outcome	Objectively verifiable indicators			Assumptions
	Result Indicators	OP5-Targets	Sources of verification	
<p>Outcome1.2.1: Improved community-level sustainable use of biodiversity in production landscapes</p>	<ul style="list-style-type: none"> • Hectares of production landscapes improved sustainable use practices • Number of significant species improved conservation status • Number and hectares of significant ecosystems maintained or improved conservation status 	<ul style="list-style-type: none"> • 4,000 hectares of production landscapes under improved sustainable use practices, • 15 significant species of near extinction maintained or improved conservation status • 	<ul style="list-style-type: none"> • SGP Data base 	<ul style="list-style-type: none"> • Nation certification process endorsed

BIODIVERSITY

OBJECTIVE 1.1 Improve sustainability of protected areas and indigenous and community conservation areas through community based actions

Programme Outcome	Objectively verifiable indicators			Assumptions
	Result Indicators	OP5-Targets	Sources of verification	
Geographic and Thematic Focus Biodiversity Portfolio Under GEF-5				
Bio-Geographic areas	Implementation mechanisms	Focused Thematic Areas		Eligible Areas

Global Significant Biodiversity Areas and Community Protected Sacred groves in marginal forest areas,	Strategic partnership with Forestry Development Authority, EPA, Nature conservation INGOs & NGOs, CBOS, Global partners.	<ul style="list-style-type: none"> • Landscape-level conservation efforts through community-based management of protected areas conservation. • Ecotourism Development • Inventorying, gazettement, and recognition of community-conserved areas 	River Gee, Grand Kru & Gedeh, Sinoe, Gbapolu & Lofa, Bong & Nimba, Bassa and River Cess
Threatened habitats and important bird areas of Ramsar Sites along the coastal and wetlands	Strategic Partnership with FDA, SCNL/ /Birdlife International affiliate NGOs, and other partners.	Threatened habitats, mountain ecosystem and Mangroves, wetlands, habitats and threatened sites important for conservation of migratory bird flyway networks	Nimba Range, Blate, Wolo & Wenegizis, Webo Montserrad Wetland ecosystem, Kpatawe & Womb Falls

CLIMATE CHANGE

Objective 2: Promote the demonstration, development and transfer of low carbon technologies at the community level

Programme Outcome	Result Indicator	OP5-Target	Sources of verification	Assumption
<u>Outcome1:</u> Renewable energy, energy efficiency mainstreamed in national development plans and programmes	<ul style="list-style-type: none"> • Number of innovative models for promotion of energy efficiency, renewable energy in development activities introduced at local levels. 	<ul style="list-style-type: none"> • at least 10 solar drier for fishing communities • 10 eco-stove production centers & 12 jatropha plant farms established in local communities at the fringes of protected areas and community forests 	<ul style="list-style-type: none"> • Project reports, Field monitoring • SGP Database 	<ul style="list-style-type: none"> • GEF Implementing Agencies and Executing agencies are involved in partnerships with SGP

<p>Outcome 2. Mainstream climate change mitigation and adaption into national develop plans, programmes such the PRS II & Vision “2030”</p>	<ul style="list-style-type: none"> • Number of projects with demonstrations addressing community level barriers to deployment of low-GHG technologies 	<p>es</p> <ul style="list-style-type: none"> • Two efficient energy saving cooking technologies for Institutional and Commercial Stoves in major urban centres • production and use of efficient energy stoves, and for small business enterprises introduced 	<ul style="list-style-type: none"> • Project reports, Monitoring reports. • SGP global Database 	<p>National consciousness on climate change phenomenon increased</p>
<p>Outcome 3 Community-Based climate change Adaptation incorporated into Community Development programmes</p>	<ul style="list-style-type: none"> • Number of indigenous climate change adaptation practices documented and best practices promoted. 	<ul style="list-style-type: none"> • At least one project initiated under the African Climate Adaptation Initiative for northwestern region of Foya, Lofa County; 	<ul style="list-style-type: none"> • project reports • SGP Database 	<ul style="list-style-type: none"> • adaptation practices increased in development initiatives.
<p>Outcome 4 Cultivation of community woodlot</p>	<ul style="list-style-type: none"> • significant number of Hectares land under improved sustainable land management and climate proofing practices 	<ul style="list-style-type: none"> • At least 5,000 hectares of woodlot under community management; 	<ul style="list-style-type: none"> • GEF SGP database, project reports and monitoring visits 	<ul style="list-style-type: none"> • increase number of community lands managed sustainably

Outcome 5 Improved community-level early warning system for climate change	<ul style="list-style-type: none"> Number of community members with knowledge on climate change improved 	<ul style="list-style-type: none"> 100 local community in central and northwest understand climate proof practices and active in practices; 	GEF SGP database, project	Local level early warning system made effective
CLIMATE CHANGE				
Objective 2: Promote the demonstration, development and transfer of low carbon technologies at the community level				
Programme Outcome	Result Indicator	OP5-Target	Sources of verification	Assumption
Land use practice that negative impacts agro and forest eco-systems reduced	actions and practices that reduce negative impacts on land uses	reduced pressure on land uses	reports and monitoring visits	Sustainable resource use practices increased
Geographic and Thematic Focus on Climate Change Portfolio Under GEF-5				
Geographic areas	Implementation mechanisms	Thematic Area focus	Eligible Areas	
Agro-ecosystems foya dry land savannah, forest ecosystem Costal ecosystem	Partnerships with EPA, local authorities, climate change network, the private sector and development partners, UNDP energy & environment	Promoting mainstreaming, and replication of renewable energy, energy efficiency approaches and models for expanding energy access	Central, southeast, northwest of the Liberia, East and West Nimba Nature Reserves, community forest	
flood prone areas, coastal urban centers	Partnership between UNFCCC focal point & climate Change Secretariat and SGP	Adaptation under the strategic priority on adaptation of GEF	Monrovi, Buchana, Roportsport, Marchall	
LAND AND DEGRADATION				
Objective 3: Maintain or improve flow of agro-ecosystem and forest ecosystem services to sustain livelihoods of local communities.				
Project Outcome	Objectively verifiable indicators		Sources of verification	Assumptions
	Indicator	OP5-Target		

<p>Outcome: Local communities engage in sustainable land management (SLM) actions and practices, reduce negative impacts on forest ecosystems</p>	<ul style="list-style-type: none"> improved agricultural, land and water management practices increased Number of farming groups adopting best practice in environmental management increased, 	<ul style="list-style-type: none"> At least 5 project engaged in sustainable agricultural, land and water management practices ; two agriculture colleges mainstream SLM principles in curricula 	<p>GEF-SGP database, project reports and monitoring visits</p>	<p>Partnerships at the global and local levels secured</p>
<p>Outcome Community-based models of sustainable forestry management</p>	<ul style="list-style-type: none"> Number proven sustainable land management models and good practices for sustainable 	<ul style="list-style-type: none"> At least one SGP model is incorporated in the National Strategy for Desertification 	<p>GEF SGP database, project reports and</p>	<p>Partnerships at the global and local levels secured</p>

LAND DEGRADATION				
Objective 3: Maintain or improve flow of agro-ecosystem and forest ecosystem services to sustain livelihoods of local communities.				
Project Outcome	Objectively verifiable indicators		Sources of verification	Assumptions
	Indicator	OP5-Target		
<p>Low carbon sequestration.</p>	<p>Sustainable forestry management</p> <ul style="list-style-type: none"> Number of national and international agencies or partners are aware of successful SGP demonstrations and innovative 	<ul style="list-style-type: none"> At least one international agency and partner has learned of SGP demonstrations and innovative approaches SGP knowledge, experiences, and best 		

Outcome 3.3: Improved community-level actions and practices, and reduced negative impacts in land use frontiers of agro-ecosystems and forest	<ul style="list-style-type: none"> Number of community members with improved actions and practices that reduce negative impacts on land uses 	<ul style="list-style-type: none"> At least 500 community members having improved actions and practices that have reduced pressure on land uses. At least 30 community by-laws on good environmental 	GEF SGP database, project reports and monitoring visits	Land tenure issues resolved
GEOGRAPHIC AND THEMATIC FOCUS FOR OP-5 SGP LAND DEGRADATION PORTFOLIO				
Geographic areas	Implementation mechanisms	Focused Thematic Areas	Eligible Areas	
Northwest, Central and southeast regions and coastal and marine eco-systems	Partnership with farm cooperatives, smallholder farmers, concessionaires / plantation developers	<ul style="list-style-type: none"> Sustainable agriculture land use practices s; Sustainable forest and woodland management. Water resource 	Bong, Lofa, Nimba, southeast & northwest	
PERSISTENT ORGANIC POLLUTANTS				
Project Strategy	Objectively verifiable indicators		Sources of verification	Assumptions
	Indicator	OP5-Target		

<p><u>Outcome4.1</u> Improved community-level actions to prevent, reduce and phase out POPs, in environmentally sound manner,</p>	<ul style="list-style-type: none"> • Avoid burring of POPs waste and obsolete pesticides disposed of appropriately; • improved collaboration between and among statutory Agencies responsible to implement of NIP and SGP on implementation activities; 	<ul style="list-style-type: none"> • At least two waste enterprises established to avoid burning of chemical waste; • One national survey to determine the level of awareness in the community about POP 	<p>GEF SGP database, project reports and monitoring visits</p>	<p>Increase level of awareness in local communities on POPs</p>
<p><u>Outcome4.2:</u> Community-based approaches on waste management and POPs pesticide with good experiences information disseminated</p>	<ul style="list-style-type: none"> • two projects supporting the Implementation of NIP 	<ul style="list-style-type: none"> • community level waste management and organic models to control pests) 	<p>GEF SGP database, project reports and monitoring visits</p>	<p>Partnerships secured</p>
<p>GEOGRAPHIC AND THEMATIC FOCUS FOR OP-5 SGP PERSISTENT ORGANIC POLLUTANTS PORTFOLIO</p>				
<p>Geographic areas</p>	<p>Focused Thematic Areas</p>	<p>Eligible Areas</p>		
<p>Monrovia, Buchanan, concessions areas, commercial farming zones</p>	<ul style="list-style-type: none"> • Integrated pest and vector management for reduction of POPs; • Community-based waste management to prevent waste burning 	<ol style="list-style-type: none"> 1. Monrovia, Buchanan, Yekepa, Bong Mines 2. Oil palm plantations in the southeast 		