

COUNTRY PROGRAMME STRATEGY

OPERATIONAL PHASE 6 (OP 6)

COMMONWEALTH OF DOMINICA

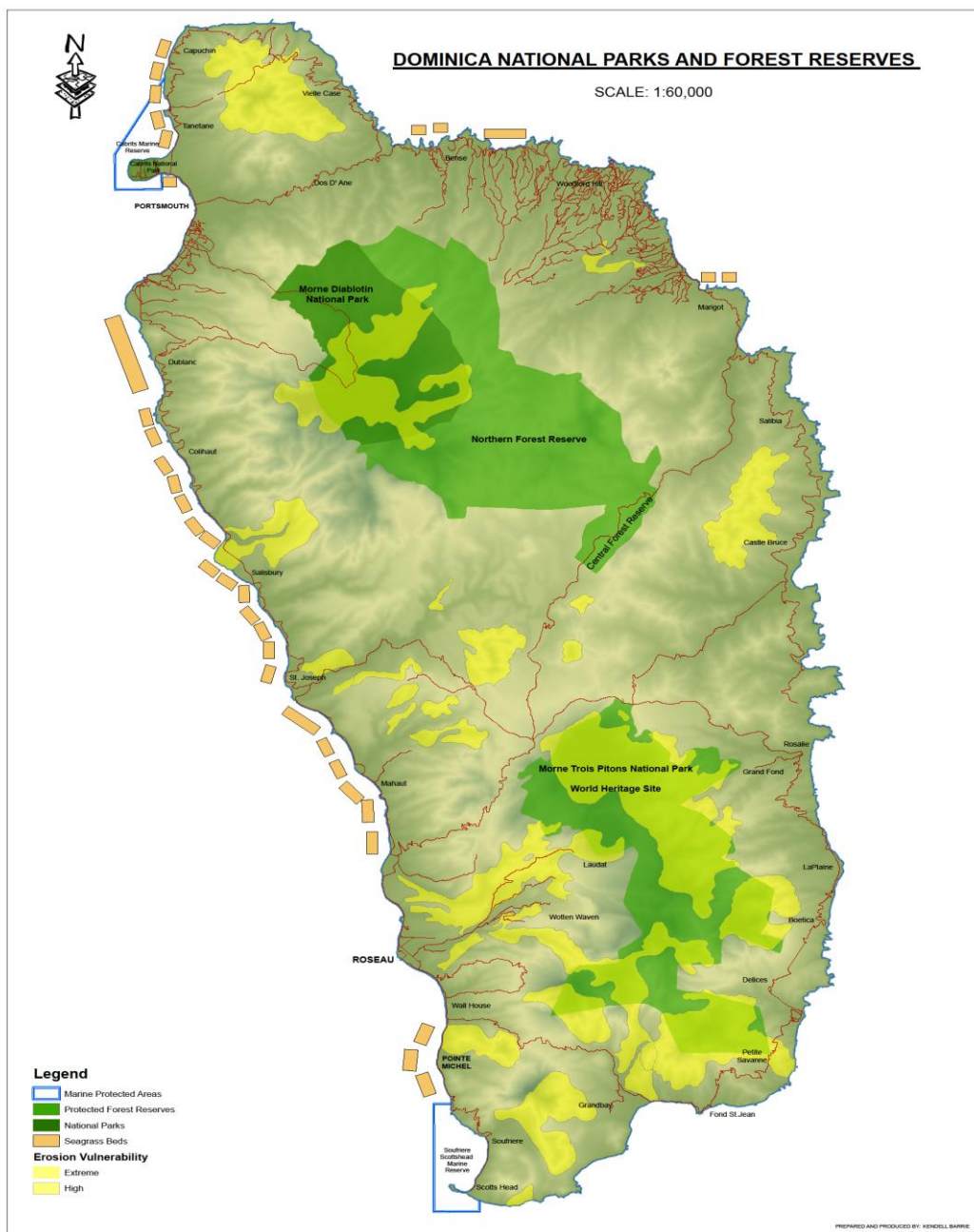


Table of Contents

Background	4
1. SGP Country Programme - Background	5
2. SGP Country Programme Niche	6
2.1 <i>Alignment with national priorities</i>	6
2.2. <i>Opportunities for Involvement of Communities and Civil Society Organizations</i>	7
2.3 <i>Support Programmes and Sectors for Collaboration</i>	7
3. OP6 Strategies.....	9
3.1 <i>Cross-cutting OP6 grant-making strategy</i>	9
3.2 <i>Landscape/seascape - based OP6 grant-making strategies</i>	9
3.3 <i>Grant maker+ strategies (pages</i>	11
3.3.1. <i>CSO-Government Dialogue Platform</i>	11
3.2.3 <i>Promoting Social Inclusion (mandatory)</i>	11
3.2.4 <i>Knowledge Management Plan</i>	12
3.2.5 <i>Communications Strategy</i>	12
4. Expected results framework.....	14
5. Monitoring & Evaluation Plan	17
6. Resource Mobilisation Plan	19
7. Risk Management Plan.....	20
8. National Steering Committee Endorsement.....	21
Annex 1: SITUATIONAL ANALYSIS	22
OP6 Landscape/Seascape Baseline Assessment	24
Annex 2: OP6 Donor Partner Strategy Annexes.....	Error! Bookmark not defined.
REFERENCES.....	33
List of Tables	
Table 1: List of relevant conventions and national/regional plans or programmes.....	6
Table 2: SGP contribution to national priorities / GEF-6 corporate results.....	7
Table 3 : Consistency with SGP OP6 global programme components	14
Table 4: Monitoring and Evaluation Framework - SGP Grantee Level.....	17
Table 5: M&E Plan at the Country Programme Level	17
Table 6: Description of risks identified in OP6	20

List of Acronyms

CARDI- Caribbean Agricultural Research Development Institute
CARICOM- Caribbean Community and Common Market
CATS- Caribbean Aqua Terrestrial Solutions
CBO- Community Based Organization
CEELP- Caribbean Energy Efficient Project
CERT- Community Emergency Response Teams
CLMEP- Caribbean Large Marine Ecosystems Projects
CNP-MS- Cabrits National Park- Marine Section
COP 21- Conference of the Parties (twenty-first sessions)
CSO- Community Service Organisation
DALCA- Dominica Association of Local Community Authorities
DAPD- Dominica Association of Persons with Disabilities
DOWASCO- Dominica Water and Sewerage Company Limited
DSC- Dominica State College
DYEO- Dominica Youth Environment Organisation
ECCMAN- Eastern Caribbean Marine Managed Area Networks
ECU- Environmental Coordinating Unit
FAO- Food and Agriculture Organization
GEF- Global Environment Facility
GHG- Green House Gases
GoCD- Government of Commonwealth of Dominica
IAP- Integrated Approach Pilots
IICA- Inter- American Institute for Cooperation in Agriculture
JICA- Japan International Cooperation Agency
LCRRS- Low Carbon Resilience Reduction Strategy,
LCDP- Low Carbon Development Path
MDNP- Morne Diablotin National Park
MSME'S-Micro Small Medium Enterprises
MTNP-WHS- Morne Trois Piton National Park- World Heritage Site
NAMA- Nationally Mitigation Action
NAP- National Action Programme
NC- National Coordinator
NGO- Non Government Organizations
NPFE- National Portfolio Formulation Exercise
NSC- National Steering Committee
NYC- National Youth Council
OECS- Organisation of Eastern Caribbean States
OP4- Operational Phase Four
OP5- Operational Phase Five
OP6- Operational Phase Six
POP- Persistent Organic Pollutants
SDG- Sustainable Development Goals
SID- Small Island Developing States
SGP- Small Grants Programme
SPCR- Strategic Program for Climate Change Resilience
UNCCD- United Nations Convention to Combat Desertification
UNDP- United Nations Development Programme
UNFCCC- United Nations Framework Convention on Climate Change
UWI- University of West Indies
YDD- Youth Development Division

SGP COUNTRY PROGRAMME STRATEGY FOR OP6

COMMONWEALTH OF DOMINICA

OP6 resources

- a. **Core funds: US\$400,000**
- b. **OP5 remaining balance: 0**
- c. **STAR funds: TBD**
- d. **Other Funds to be mobilized: TBD**

Background:

Since the launching of Global Environment Facility Small Grants Programme (GEF SGP) in 1994, and the establishment of the Country Programme in Dominica 2005, 103 projects have been undertaken with a total value of US \$5,240,145; US\$ 2,620,383 in grants and 2,619,762 in co-financing (US\$745,165 in cash and US\$2,027,839 in kind). OP4 grant allocation was US\$750,000 and in OP5, Dominica as a SIDS/Category 1 country received an indicative core grant allocation of US\$1,200,000 The projects were within the focal areas of Biodiversity (10), Climate Change (13) International waters (2), Land degradation (6), Climate change adaptation (8) Capacity development (3) and (9) multifocal.

National level operations include a National Coordinator (NC) and a temporary Administrative Assistant supported by a National Steering Committee (NSC) comprising a cross section of key stakeholders from civil society and the public sector and the Global Environment Facility Operational Focal Point (GEF OFP). SGP also utilized the services of volunteers and interns from educational institutions and the National Governments Employment Programme. National project activities are guided by the Country Programme Strategy (CPS) developed within the guidelines of the GEF programme.

1. SGP Country Programme - Background

1.1 The most important national results and accomplishments achieved under previous project are:

- Reducing threats to biodiversity in protected areas through education and alternative livelihood development
- Reducing the stress on inshore fisheries and coastal environment
- Strengthening the livelihoods and traditions of the indigenous community.
- Mainstreaming biodiversity conservation into sustainable agricultural production
- Increased collaboration of partnering agencies and communities. Supporting innovative processes and technology at community level.

Upscaling, Replication and Mainstreaming of Projects

Replicated projects included solid waste management and composting, turtle conservation, ecotourism site development and enhancement, provision of access to water for agriculture and agro-processing and the construction of storm drains to reduce risk of flooding and landslides. The major projects up-scaled were agro-processing, bee keeping, commercial production of Virgin Coconut Oil, Toloma and Farine.

Key Lessons Learned

- The need to increase staffing for effective programme management and to introduce a contingency component within the financial framework to respond to delays in receipt of funds from GEF/SGP
- Increased capacity building for grantees in quantitative data collection, project cycle management, group dynamics and advocacy and the possibility of providing support through mentor
- To improve the engagement and understanding of local government authorities need to have a better understanding of the value of the natural resources in their communities and be more engaged in the approved projects.

1.2 key base line considerations for OP6

Situational Analysis (Refer to Annex 1)

Major Partnerships and Existing Sources of Co-Financing - GEF SGP works with government agencies and departments, Statutory Boards and NGOs and tertiary educational institutions. For co-financing, collaboration has been sought with local financial, regional and international agencies like the University of Zurich, Australian High Commission-Direct Aid Program (DAP), British High Commission and Japanese AID, (JICA).

1.31. *How resources and past projects can serve as a foundation for effective implementation of SGP OP6*

SGP has developed a very effective inclusion strategy and strong partnerships based on shared goals and objectives, intrinsic in OP6, which augurs well for implementation of future projects. The success and tangible results of the projects evident at the community and national levels provides a sound basis for future development and collaboration with donor agencies. Additionally some of the past projects can be up-scaled and are foundational to OP 6 projects.

2. SGP Country Programme Niche

2.1 *Alignment with national priorities.*

Table 1: List of relevant conventions and national/regional plans or programmes

Rio Conventions + national planning frameworks	Date of ratification / completion
Basel convention on the control of trans boundary movements of hazardous wastes and their disposal	Ratified In effect 3 rd August 1998
Cartagena Convention for the protection and development of the marine environment of the wider Caribbean	Ratified 7 th September 1990
Cartagena Protocol on Biodiversity	Ratified 13 th July 2004
CBD National Biodiversity Strategy and Action Plan (NBSAP)	Completed 2001
Cotonou agreement (replacement of Lome Convention)	Ratified 26 th July 2002
National Growth and social protection strategy	2014-2018
International convention on oil prevention preparedness, responses and cooperation	Acceded August 2001
International Plant Protection Convention	Ratified April 1979
International Convention for the Regulation of Whaling	Acceded 18th June 1992
Kyoto Protocol on Climate Change	Ratified 5th January, 2005
MARPOL protocol Annexe 2 and 5	Acceded 2000
Poverty Reduction Strategy Paper (PRSP)	2009
Rotterdam Convention on the prior informed consent procedure for certain Hazardous Chemicals and Pesticides in International Trade	Acceded January 2006
Stockholm Convention on Persistent Organic Pollutants (POPs)	Acceded 3 rd August 2003
Third UN Convention of Law of the Sea (UNCLOS)	Ratified 3 rd September 1991
UN Convention on Biological Diversity (CBD)	Ratified 5 th July 1994
UN Convention to Combat Desertification (UNCCD)	Ratified 28th November 1997
UN Convention on the International Trade in Endangered Species of Wild Fauna and Flora (CITES)	Ratified 30 th June 1995
UNCCD National Action Programmes (NAP)	draft 2015
UN Framework Convention on Climate Change (UNFCCC)	Ratified 21st March 1994
UNFCCC Nationally Appropriate Mitigation Actions (NAMA)	
<ul style="list-style-type: none"> • Vienna Convention for the Protection of the Ozone Layer • Montreal Protocol on Substances that Deplete the Ozone Layer 	Ratified March, 1993 Ratified June, 1993

2.2. Opportunities for Involvement of Communities and Civil Society Organizations

SPG will liaise with the various agencies to promote national and community consultations on the various policies and national actions plans developed for these conventions. Some key policies include the UNCCD (NAP) (2015) the UNFCCC (NAMA) / Low Carbon Resilience Reduction Strategy, the Stockholm Convention on Persistent Organic Pollutants (POPs) The Dominica State College and the UWI Open Campus are avenues for both sensitization and community involvement through their ongoing programmes. OP6 SGP will work closer with the UNDP country office, UN Women and other UN Agencies and regional and international organisations such as the OECS Commission, to upscale its projects and increase opportunities for replication.

2.3 Support Programmes and Sectors for Collaboration

Several government ministries and other agencies (national, regional and international) and organisations are already implementing or plan to implement projects and programmes that have synergies with SGP OP6 priorities and thus present opportunities for SGP to network and attract co-financing, for up-scaling projects and collaborate on new initiatives. SGP can also share on experiences and procedures which can be incorporated into the programmes and projects of partners and others.

Table 2: SGP contribution to national priorities / GEF-6 corporate results

1 SGP OP6 strategic initiatives	2 GEF-6 corporate results by focal area	3 Briefly describe the SGP Country Programme niche ¹ relevant to national priorities/other agencies ²	4 Briefly describe the complementation between the SGP Country Programme UNDP CO strategic programming
1.Community landscape/seas cape conservation	<i>Maintain globally significant biodiversity and the ecosystem goods and services that it provides to society</i> <i>Synergy with government –funded projects</i>	Conservation and sustainable management of environmentally sensitive terrestrial and marine ecosystems and protected areas Synergies with other projects - Eastern Caribbean Marine Managed Areas Network ECMMAN Project The Nature Conservancy - Caribbean Aqua Terrestrial Solutions- CATS - Disaster and Vulnerability Reduction Project - Dominica National Land Use Plan	UNDP-GEF-5 “Supporting Sustainable Ecosystems by Strengthening the Effectiveness of Dominica’s Protected Areas System” UNDP – Japan Caribbean Climate Change Partnership Project

¹ “Niche” refers to the role or contribution that the Country Programme is best fitted to perform and for which the other stakeholders agree with

² Describe only for those OP6 strategic initiatives which will be programmed by the SGP country programme.

<p>2. Climate Smart Innovative Agro-ecology; Community landscape/seas cape conservation</p>	<p><i>Sustainable land management in production systems (agriculture, rangelands, and forest landscapes)</i></p>	<p>Building climate resilient communities by strengthening the capacity of the communities to address climate change risks in food security in agriculture and fisheries and reducing vulnerability to desertification, soil loss, and the contamination of water resources</p> <p>Synergies with other projects Agricultural Investment Unit (2010) - A revolving grant fund for qualified farmers</p> <p>Global Climate Change Alliance (GCCA) project for Climate Change Adaptation (CCA) and sustainable land management (SLM) in the Eastern Caribbean. OECS/EU- 2016-2017</p> <p>Inter-American Institute for Cooperation in Agriculture, IICA - rainwater harvesting for vegetable growers.</p>	<p>UNDP-GEF-5: Supporting Sustainable Ecosystem by strengthening the Effectiveness of Dominica’s Protected Area System</p> <p>Japan – Caribbean Climate Change Partnership- UNDP</p> <p>Food and Agriculture Organisation of UNDP, FAO</p> <p>UNDP/UNV Differently Abled Disaster Risk Reduction Strategies (draft)</p> <p>UNDP / FAO /Fisheries Division- Climate Change Adaptation in the Eastern Caribbean Fisheries Sector</p>
<p>3.Low Carbon Energy access co-benefits</p>	<p><i>Support to transformational shifts towards a low-emission and resilient development path</i></p>	<p>Promote the development and utilization of indigenous sources of energy and renewable energy technologies so as to increase climate resilience, reduce poverty and enhance gender equality.</p> <p>OECS/ CGCCA “Climate Change Adaptation and Sustainable Land Management in the OECS Project”</p> <p>Government of Dominica – Geothermal Project</p>	<p>Japan – Caribbean Climate Change Partnership- UNDP Regional Caribbean, 2014 -2017</p> <p>UNDP GEF-5 MSP Low Carbon Development Path:</p> <p>The Caribbean Energy Efficient Lighting Project (CEELP)/ SIDS-DOCK Project</p>
<p>5.CSO- Government dialogue platforms</p>	<p><i>Enhance capacity of civil society to contribute to implementation of MEAs and national and sub-national policy, planning and legal frameworks</i></p>	<p>Empower CSO and the private sector to constructively engage in national policy planning and implementation of national environmental policies and programmes</p> <p>Synergies with other Projects Environmental Coordinating Unit/Forestry, National Parks & Wildlife Division - Public Awareness programme</p>	<p>Sustainable Development Goals</p>
<p>6.Promoting Social inclusion (Grant-makers+)</p>	<p><i>GEF Gender Mainstreaming Policy and Gender Equality Action Plan and GEF Principles for Engagement with Indigenous Peoples</i></p>	<p>Develop programmes to encourage the participation of indigenous communities, vulnerable and marginalized populations and the youth in programme development and implementation</p> <p>Gender mainstreaming in collaboration with the Bureau of Gender Affairs, Dominica National Council of Women, University of the West Indies Open Campus & CARIMAN</p> <p>Ministry of Kalinago Affairs and the Kalinago Council</p>	

7.Global Reach for Citizens Practice-Based Knowledge Programme (Grant-makers+)	<i>Contribute to GEF KM efforts</i>	Connections between CPS and global priorities for the digital library and SSC Innovation Exchange Platform (i.e. examples of tested technologies, comparative advantage and experience of SGP country programme)	UNDP CO Barbados and OECS GEF SGP Newsletter and TV series SIDS ADAPT
--	-------------------------------------	---	---

3. OP6 Strategies

3.1 Cross-cutting OP6 grant-making strategy

Capacity Development - Based on project and stakeholder evaluations of OP5, the following are the identified areas for capacity building to OP6

- For potential grantees: organization development-include recommendation for group dynamics, project cycle management, advocacy/and negotiation skills, marketing and project evaluation.
- Develop local capacity in GHG auditing, wind and hydropower technologies, and solar energy conversions
- For local co-operatives and other NGOs/CBOs/CSOs - record keeping, environmental education and group dynamics.

Other recommendations are as follows:

- Securing one (1) IP Fellowship in project management and monitoring and evaluation.
- Implementation of one (1) project each with Indigenous People the Kalinago, persons with disabilities and the youth
- Upscale the role of women in fisheries through development of a cottage industry for fish processing, e.g. smoked fish, to improve their livelihood and broader participation in sector.
- Contribute to greening of a newly built community for Tropical Storm Erika’s victims, to serve as a model for a sustainable, climate resilient community

3.2 Landscape/seascape - based OP6 grant-making strategies

Process for selecting the landscape/seascape³ (Refer to appendix 2 for detailed information)

Focus group meetings and stakeholder consultations were held with project grantees, relevant heads of government departments, UNDP National Focal Point, donor agencies, programme partners and the private sector to evaluate past programmes, and obtain recommendations for priority areas for implementation.

³ The countries could focus on existing landscape/seascape the country programme is already focused on or select a new landscape/seascape focus through stakeholder consultations, then conduct the baseline assessment. (Described in the Call for Proposals for the OP6 Country Programme Strategy Development Process, as well as in the suggested

This was supported by desk research, field analysis and interviews with the Ministry of Agriculture and Forestry, Division of Forestry Wildlife and Parks, and the Fisheries Division to collate baseline data on the current state of the landscape and seascape. Current and potential projects relevant to these areas as well as threatened landscapes and seascapes were evaluated for elaboration of CPS. The map below shows the proposed focus areas within the landscape and seascape.

Strategic Initiatives

Based on the outlined policies, programmes and priority areas, the following constitutes the SGP OP6 strategy initiative for the country programme.

- Community landscape/seascape conservation
Conservation and sustainable management of the landscape and seascape
- Low carbon energy access co benefits
Removal of barriers to renewable energy and energy efficiency
- Climate smart innovation ecology
Building climate resilient communities by investing in and strengthening the capacity of the communities to address climate change risks in food security and agriculture.
- Introducing tools and approaches to pesticides, chemical, solid waste and heavy metal management at the community level

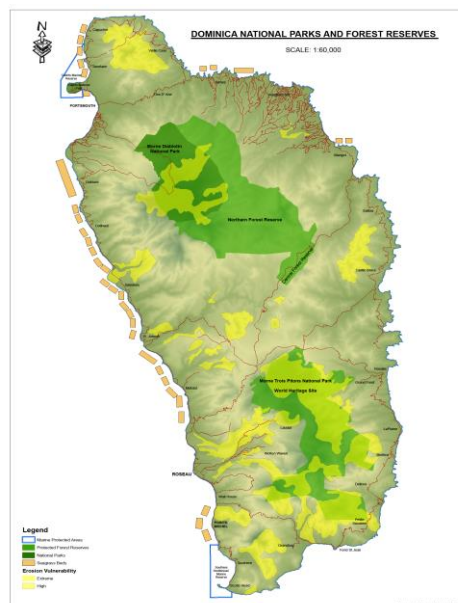


table of contents for a baseline assessment). Please note that in some SIDS and small countries it may not be practical to identify separate landscapes, hence the country programme strategy may cover the entire country territory, or propose a specific thematic focus where relevant.

Figure 1: Proposed Focus Area within the Landscape and Seascape

Strategy to implement grant making

There will be an OP6 launching and publicizing of the Country Programme Strategy, to be followed by sensitization workshop on the OP6 strategic initiatives. SGP will then put out a ‘‘call for concepts’’. Concepts will be selected based on assessment including sites visits, stakeholder/community meetings organization /community needs assessment (ONA/CNAs) consultations with potential partners, applicants. The NC will do the initial review and selection of concepts which will be confirmed on consultation with the NSC or TAG.

Applicants of selected concepts will attend a Proposal Writing Clinic and will continue to be guided and assisted by the NC in completing their proposal. The NC will review and approve projects utilizing SGP project proponents. Projects will be in line with CPS.

3.3 Grant maker+ strategies

3.3.1. CSO-Government Dialogue Platform

CSO dialogue platforms will be organized in collaboration with relevant government agencies responsible for policy development and implementation, institutions of higher learning, community based umbrella organizations, the private sector, the public and private sector media so as to distribute the cost, garner support for ongoing dialogue and increase sensitization. Thematic areas for a dialogue platform will include relevant conventions and National Action Plans and the newly developed National Land Use Policy.

The format for this dialogue will entail public lecture series, the establishment of a ‘‘National Biodiversity Forum’’ and symposia.

3.2.2 Policy Influence

SGP will increase documentation, dissemination and information sharing on SGP methods, approaches, successes and lessons learned and will liaise with the OECS and CARICOM to provide input into the Policy Framework for Natural Resource Management.

3.2.3 Promoting Social Inclusion (mandatory)

Women Empowerment -SGP will organize a national women’s forum and training seminars in collaboration with the UWI Open Campus, Bureau of Gender Affairs and the Dominica National Council of Women to discuss methods of mainstreaming women into the management and conservation of biodiversity. Knowledge products showcasing women in projects will be developed and outstanding women project leaders will be selected for peer exchanges and mentoring programmes.

Youth and Children - SGP will work with DYEO/NYC/YDD, local environmental clubs to incorporate their ideas into SGP thematic areas and will implement a special environmental outreach and educational program to include summer camps and book/kits activities for youth and a youth forum to integrate biodiversity into the youth policy and action plan . Youth leadership training programs on environmental issues and proposal writing will be offered to build their capacity. Programs to engage youth in data collection will be developed.

Indigenous People – Existing projects and programs on biodiversity will be up-scaled and one new project will be undertaken within the Kalinago Territory.

Persons with Disabilities –GEF/SGP will invite and include persons with disabilities in all fora/training activities and provide support to encourage participation. At least one project will be undertaken.

3.2.4 Knowledge Management Plan

SGP will build on past experiences of its knowledge management plan and will organize the following to improve access to information exchange and dissemination:

- Knowledge Fairs, Peer to Peer exchanges, demonstration sites visits and replication and upscaling of community innovations.
- Establish a SGP Documentation Library and Knowledge Centre
- Production of photo stories and short videos of selected projects capacity building for CBOs, CSOs and NGOs to facilitate the production of photo stories and short videos.
- Organize end of OP year stakeholder consultations to evaluate country programme.
- Establish at least one learning centre/demonstration site at the community level to increase access to information on specific sites, projects and best practices and relevant environmental issues and information.

3.2.5 Communications Strategy

The communication strategy will facilitate easier access to information through the establishment of a clearing house and the development of partnerships with the media and other agencies/departments involved in educational and awareness building programmes so as increase opportunities for networking and information sharing.

Programming will entail the use of television, radio programs and social media. Activities will include an OP6 launch and workshops to sensitise stakeholders and the public on OP6 strategic initiatives priority programs, engaging the youth in drama and song production, sensitizing the media on the programs and projects of GEF SGP through workshops, organized project sites visits and press conferences, the staging

of exhibitions and special events for celebration of commemorative environmental days (e.g. Earth Day, World Environment Day, World Biodiversity Day, World Food Day) in collaboration with other relevant stakeholders/ partners.

Other planned initiatives include a quarterly publication in newspaper and provision of support to grantees to develop a fact sheet and case study reports, and photo stories of completed projects to promote the work of SGP. This communication strategy will be implemented successfully with a well-established staff and increased volunteers and interns are available on a regular, ongoing basis.

4. Expected results framework

4.1. Column 1 the OP6 global project components and global targets (in number of countries) as described in the GEF CEO Endorsement document.

Table 3 : Consistency with SGP OP6 global programme components

1 OP6 project components	2 CPS targets	3 Activities	4 Indicators	5 Means of verification
<p>1.1 SGP country programmes improve conservation and sustainable use and management of important terrestrial and coastal/marine ecosystems through implementation of community based landscape/seascape approaches in approximately 50 countries</p>	<ul style="list-style-type: none"> • 1 marine project implemented • 2 terrestrial projects 	<p>Marine Projects</p> <p><i>Marine training for fisheries cooperatives to build management capacity and other skills</i></p> <p><i>Cottage Industries for processing (e.g. Smoked fish project</i></p> <p><i>Converting seaweed in production of compost and other non-chemical fertilizer</i></p> <p><i>Establish one project on Management of Marine “Invasive Species- Sea Grass, Lion Fish”.</i></p> <p>Terrestrial projects</p> <p><i>National awareness programme on habitat management for crabs</i></p> <p><i>Ridge/Mountain to reef approach – select a small community to work with in this approach as a model demonstration project work with communities along river. (Crayfish river, Kalinago Territory, Colihaut, Pichelin)</i></p> <p><i>Protection of rivers- river bank stabilization and replanting</i></p> <p><i>Coastal area vegetation restoration</i></p> <p><i>Planting trees of economic importance for soil stability and to reduce soil erosion on the coastal and inland areas- neem, vertiver</i></p>	<p><i>Hectares of landscape or seascape conserved</i></p> <p><i>No of communities and people benefitting</i></p>	<p>Individual progress reports by grantees</p> <p>Site visit reports</p> <p>Baseline assessment comparison</p> <p>Annual Monitoring Report (AMR)</p> <p>Country Programme review by NSC and other partners</p>

		<i>Project with the Dominica Essential oils for replanting of bay trees</i>		
		<i>Clay/dirt block manufacturing utilising waste soil</i>		
2.1 Agro-ecology practices incorporating measures to reduce CO2 emissions and enhancing resilience to climate change tried and tested in protected area buffer zones and forest corridors and disseminated widely in at least 30 priority countries	<ul style="list-style-type: none"> • 2 projects to be implemented 	<p><i>Introduce climate smart agro-ecological practices to climate proof selected farms and reduce vulnerabilities based on assessment towards the Establishment of a model climate smart agro ecological farm in buffer zone of MTNPWHS /MDNP - e.g. Syndicate.</i></p> <p><i>Workshop on climate smart agro- ecological practices</i></p>	<p><i>Number of successful agro-ecology typology practices incorporating measures to reduce farm based emissions and enhance resilience.</i></p> <p><i>Number of communities that demonstrate or are showing increasing levels of adaption benefits</i></p> <p><i>Number of farmers with multiple cropping systems</i></p> <p><i>Number of hectares brought under productive and sustainable management practices</i></p>	<p>Individual project reporting by SGP country teams</p> <p>Socio-ecological resilience indicators for production landscapes (SEPLs)</p> <p>Annual Monitoring Report (AMR)</p> <p>Country Programme Strategy Review (NSC inputs)</p>
3.1 Low carbon community energy access solutions successfully deployed in 50 countries with alignment and integration of these approaches within larger frameworks such as SE4ALL initiated in at least 12 countries	<p><i>At least one innovative project of locally adapted solutions demonstrated and documented</i></p> <p><i>At least one of 5 communities target households achieving energy access</i></p>	<p><i>Financing for community technologies (small hydro, solar, biomass, bioenergy)</i></p> <p><i>Promotion of a green community-Identify one low income community to undertake this project (transition towns) for introduction of solar water heating, back up water systems etc. e.g. Boetica/Tarreau</i></p> <p><i>Use of a bio digester for production of biogas at the community level (would require training)</i></p> <p><i>Consideration for support to a multipurpose community centre to serve as a model disaster relief centre. – project</i></p>	<p>Number of communities and households achieving low carbon energy access solutions.</p> <p>Number and type of installations successfully utilized.</p> <p>Qualitative and possibly quantitative data on resilience, ecosystem effects, income, health will be measured</p>	<p>AMR, country reports</p> <p>AMR, global database, country reports Special country studies⁴</p> <p>Country Programme Strategy Review</p>

⁴ Only applies to lead countries in this strategic initiative`

		<p><i>activities could include renewable energy systems, rain water tanks, irrigation of grounds with waste water, garbage collection unit for separation at source.</i></p> <p><i>Introduction of technology to develop solar ovens and other solar generated small household devices.</i></p>	Ability for scaling up and replication	(NSC inputs)
<p>4.1 Innovative community-based tools and approaches demonstrated, deployed and transferred, with support from newly organized or existing coalitions in at least 20 countries for managing harmful chemicals and waste in a sound manner</p>	<p><i>1 project– Pesticide Management work with pesticide control board</i></p> <p><i>Tools and approaches to: solid waste management implemented in at least 2 communities</i></p>	<p><i>Encourage group/organization to do research on pesticides/chemicals banned assessment of chemicals on island listing of what needs to be disposed – type/risks/quantities/ where stored/current method of disposal</i></p> <p><i>identify best way to dispose and collaborate with relevant agencies/organizations for proper disposal</i></p> <p><i>Undertake a pilot project in a community for the establishment of waste separation and composting facilities in communities as a means of livelihood development to upscale 4H, MJTVC, FCIC and AWM and Eco Balance projects</i></p> <p><i>Recycling project – DAPD craft training in use of recycled material - DAPD</i></p> <p><i>Reduce use of chemicals – pesticides</i></p> <p><i>Demonstrate and promote use of indigenous plants and traditional methods of pesticide management, (neem oil, dried orange peel for mosquitos</i></p> <p><i>Continuing the programme under OP5</i></p> <p><i>Used cooking oil are being collected at present for the production of biodiesel partnership with the Operation Youth Quake</i></p> <p><i>Documentation to produce publication to share with public and global programme</i></p>	<p><i>Number of community-based tools/approaches successfully applied to avoid and reduce chemicals.</i></p> <p><i>number of organizations, communities and volume of population impacted</i></p> <p><i>Number of women successfully utilizing tools and approaches.</i></p> <p><i>No of youth ,indigenous people and people with disability impacted</i></p>	<p>Individual project reporting by SGP country teams</p> <p>Strategic partnership with IPEN country partners</p> <p>Annual Monitoring Report (AMR)</p> <p>Country Programme Strategy Review</p>

5. Monitoring & Evaluation Plan

SGP utilizes the participatory approach in project identification and preparation through meetings and consultations with stakeholder organisations/communities and the establishment of a broad-based project monitoring team consisting of a cross section of stakeholders.

Monitoring and evaluation at the country programme level will be based on the indicators and targets set in Table 3 of the CPS. For individual projects, a monitoring and evaluation plan is developed by project grantees based on the CPS evaluation framework. M & E reports at the grantee level are prepared quarterly or based on a disbursement cycle. All reports are aggregated and put in a database and the results tracked to assess the outcomes of the CPS.

The use of the adaptive management and participatory process in M & E will provide an opportunity for corrective measures at early stages of the project to ensure successful project outcome.

Country programme monitoring will be done on a regular basis at NSC meetings as well as at review meetings with project partners. Evaluation at the country programme and individual levels, is undertaken twice - a mid-term evaluation and an end of project evaluation facilitated by an independent, external evaluator. (Refer to tables 4 and 5)

Table 4: M & E Plan at the Country Programme Level

M&E Activity	Purpose	Responsible parties	Timing
Country Programme Strategy elaboration	Framework for identification of community projects	NC, NSC, grantees stakeholders,	At start of Operational Phase
Annual Country Programme Strategy Review	Learning; adaptive management	NC, NSC, CPMT	Annual review ⁵
NSC Meetings to review project	Assess effectiveness, approaches; learning; adaptive management	NC, NSC, UNDP	Minimum twice per year
Annual Country Report (ACR) ⁶	Enable efficient reporting to NSC	NC presenting to NSC	Once per year in June

⁵ The CPS is a living document, and should be reviewed and updated as deemed necessary by the NSC on a periodic basis as part of the annual strategy review.

⁶ The country programme should be reviewed in consultation with the NSC members, national Rio Convention focal points, and the associated reporting requirements. The Annual Country Report should be presented at a dedicated NSC meeting in June each year to review progress and results and take decisions on key adaptive measures and targets for the following year.

Annual Monitoring Report (AMR) ⁷ Survey (based on ACR)	Enable efficient reporting to CPMT and GEF and donors	NC submission to CPMT	Once per year in July
Strategic Country Portfolio Review	Learning; adaptive management for strategic development of the CP	NSC	Once per operational phase

Table 5 - M & E Plan SGP Grantee Level

M&E Activity	Purpose	Responsible parties	Timing
Training of grantees on ME methods, Site visit and meeting with project stakeholders	Project proposal and site evaluation - Supporting stakeholder participation	NC & NSC	Project inception and preparation stage
Review of quarterly Progress and financial reports from grantees, site visits, stakeholder meetings	To evaluate achievement, undertake corrective actions, lessons learned and the way forward.	NSC/NC/ project partners	Quarterly / per disbursement of funds
Project Evaluation and audit report Mid-term	To monitor outputs , expenditure, filing and reporting systems and stakeholder participation and lessons learned	NC, NSC/ co-financiers (optional)	Mid-term
End of Project Internal Evaluation and expenditure report -	To evaluate inputs and outputs against expenditure and to highlight lessons learned	NS/ NSC	End of project
End of project external evaluation report		External evaluator/ NSC	End of project
Final reports submitted to SGP database	Project outputs/ expenditure reports as per project component	NC	End of project

⁷ The AMR Survey will essentially draw upon information presented by the country in the Annual Country Report (ACR) with few additional questions. It will enable aggregation of country inputs by CPMT for global reporting.

6. Resource Mobilisation Plan

6.1. SGP will target public and private sector organizations that share the same goals and objectives to enhance or increase cash and/or in-kind co-financing. At the project level, project grantees will be encouraged to provide in-kind contribution. SGP will work with partners to benefit from their programming and technical services especially where both parties are engaged in similar type programs and projects to reduce the cost of technical services required by the programme. The internship programmes already established with one local college and one foreign university will be further strengthened, formalized and expanded to include other interested institutions

Collaboration with relevant government department like the Forestry Division, the Divisions of Agriculture and Fisheries Division and the Environmental Co-ordinating Unit and the Dominica Solid Waste Management Corporation, Institutions of Learning like the Dominica State College, will be sought for technical and financial assistance and to access to other external funds.

SGP will approach local institutions/businesses and other regional and international agencies such as The Nature Conservancy, UN Women to serve as a delivery agency for similarly based programmes/projects

Local financial institutions like the National Commercial Bank, the Credit Unions and the National Development Foundation with credit portfolios targeting agriculture, fishing, and small livelihood development will also be approached for co-financing and technical support.

SGP will continue to strengthen cooperation with existing bilateral and multi-lateral funding agencies like CARDI and IICA and the CCCCC and others including the World Bank, “Green Climate Fund”, CARICOM CRFM, JICA, the OECS Commissioner, FAO and the Japan-Caribbean Climate Change Partnership Project, German and the Australian government-funded (DAP), will identify potential and proposed portfolio of projects with shared objectives and synergies relevant to in the OP6 priority strategic initiatives.

7. Risk Management Plan

7.1 Key risk in implementation of OP6 CPS

Project risks will be generally low except for the impact of natural disasters, and unavoidable residual risks from internal conflicts that arise periodically within NGO / CBO organization and project implementation. Efforts have been made at the project design stage to highlight and mitigate these risks. However this will require periodic monitoring and management through the use of participatory tools and capacity building programmes to enhance the success of the projects. Risks and recommended measures are outlined in Table 6

Table 6: Description of risks identified in OP6

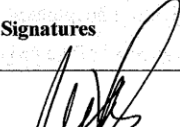
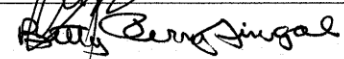
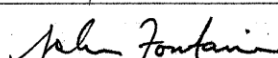
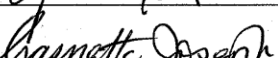
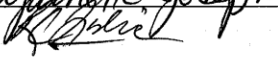
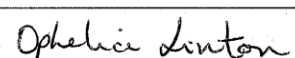
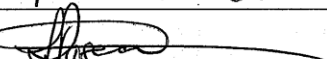
Describe identified risk	Degree of risk (low, medium, high)	Probability of risk (low, medium, high)	Risk mitigation measure foreseen
Natural disasters –(Hurricanes, flooding landslides) can slow down project implementation	High	High	Reduce project activities through the hurricane season. Identify risk and mitigation measures prior to project implementation
Deterioration of stakeholder engagement and participation at the grantee organization level which affects project implementation as well as sustainability pre and post SGP	Medium	Medium	Establish a consultation process to allow stakeholders to express their views at all points of monitoring and evaluation and develop mitigation measures. Capacity building in group dynamics.
Inadequate financial accountability of projects funds	Medium	Low	Training and periodic auditing of accounts
Delayed receipt of project funds from co financiers can temporarily halt project execution	Medium	Medium	Establishment of a contingency fund

7.2 Tracking Risk

Risks will be tracked at the OP6 CPS and at project design stage of individual projects. Tracking will continue through quarterly monitoring of projects as well as the Mid-term and Annual reports at the project level and the CPS Annual review. At each stage of the monitoring and review process mitigation measures will be identified and implemented to reduce the risk.

8. National Steering Committee Endorsement

Note: The signature of endorsement at this point is for the complete and final CPS duly reviewed by the NSC and agreed as the guide to the implementation of OP6 by the SGP Country Programme.

NSC members involved in OP6 CPS development, review and endorsement	Signatures
Minchinton Burton	
Betty Perry Fingal	
John Fontaine	
Garnette Joseph	
Rawle Leslie	
Ophelia Linton	
Lloyd Pascal	
Josephine Dublin Prince	
Delia Cuffy Weekes	
Vanessa Lisa Winston	

Annex 1: SITUATIONAL ANALYSIS

The Commonwealth of Dominica is the most northerly of the Windward Islands lying between Guadeloupe and Martinique. It has a population of 71,293 (2011 Preliminary Population and Housing Census) of 36,411 males and 34,882 females. It measures 29 miles (40 km.) by 14 miles (22 km) and covers an area of 289 square miles (751 km²) with a coastline of 148km and continental shelf of 900 km². 62% of the population (44,000) as well as major industry and infrastructure are located along the coast.

Major economic sectors (2013) are agriculture (15.9% of GDP), manufacturing (including agro-processing) 3.6% of GDP, industry (22.4% of GDP) and services (56.3% of GDP). Thirty-two percent (32%) of Dominica's total land area is used for agriculture.

Dominica has seven (7) volcanic peaks running from north to south, two (2) ecological parks, Morne Trois Pitons National Park World Heritage Site, MTNPWHS, and the Morne Diablotin National Park, MDNP and two (2) forest reserves covering a total area of 16,102.7 ha.

Sixty-six percent (66%) of the land area (5172 ha) is covered by undisturbed forest with seven (7) distinct vegetation types ranging from coastal swamps and dry scrub woodland on the coast, to rain forest and elfin woodland in the interior with some edaphic formations. It supports a high level of biodiversity including over 1,000 species of flowering plants with about sixty woody plant and tree species per hectare (Environmental Coordinating Unit, 2000). There are no legally established buffer zones around the national parks.

Dominica's coastal resources consist of approximately fifty (50) beaches, endangered wetlands located along the Indian River, the Cabrits peninsula and on the north east coast between Thibaud and Wesley. Seagrass beds dominated by *Syringodium filiforme*, *Halophila decipiens* and *H. stipulacea* and coral reef habitats are found along the western and northern coasts and coral reef banks of Grand Savanne, Delices and La Plaine. There are two (2) established marine protected areas, the Soufriere/Scott's Head Marine Reserve (SSMR) and the Cabrits National Park –Marine Section (CNP-MS). Dominica does not have an integrated coastal planning framework, hence the incidence of habitat degradation from coastal development, quarrying and marine pollution tends to be high.

Other critical risk factors contributing to its ecological vulnerability are natural disasters as a result of its location within the hurricane belt, its topography, youthful and fragile soils and its high volcanic activities. Man induced factors include poorly planned infrastructural development, poor agricultural practices, over-exploitation of inshore fisheries resources, deforestation, agro-chemical pollution, hunting and capture of

wild life and the increase in invasive species within the terrestrial and marine eco-systems. The National Biodiversity Strategy and Action Plan 2014- 2020 will serve as a guide in the implementation of programmes for SPG 06 within the relevant priority areas.

Annex 2 - OP6 Landscape/Seascape Baseline Assessment

Dominica as an island is considered a landscape and seascape. In term of focus areas, emphasis will be place on protected terrestrial and marine areas and communities adjacent to these areas as well as coastal swamps that are endangered, and areas with coral reefs and seagrass beds that are threatened.

Focus group meetings and stakeholder consultations were held project grantees, relevant heads of government departments, donor agencies and programme partners, the private sector, UNDP National Office and focal points to undertake the following:

- Evaluate past SGP and identify the challenges, weaknesses, successes and failures and to make recommendations for improvements.
- Recommend priority projects for implementation based on national priorities and OP6 priorities.
- Provide information on existing or proposed projects that can complement future projects under OP6.
- Identify priority areas within the landscape and seascape for interventions based on the proposed SP6 priority areas.
- Provide information on sources of co-funding to support the proposed projects

Desk research and field analysis as well as interviews were undertaken with the Forestry, Fisheries and Agriculture Division to collate baseline data on the current state of the landscape and seascape, ongoing actions and plans relevant to these areas to evaluate threatened landscapes and seascapes for the elaboration of OP6 as well as to assess potential for synergy with UNDP and other partner agencies.

Dominica as an island is considered one landscape and seascape. Based on the desk research and field analysis, focus areas for SPG OP6 should be on protected terrestrial and marine areas and adjacent communities, areas vulnerable to high erosion, and developing the adaptive capacity of communities to climate change and disasters.

For coastal ecosystems, areas with coral reefs, seagrass beds and wetlands that are important for marine biodiversity and adjoining communities including high fishing communities were also prioritized.

Criteria used for the selection of communities are as follows:

- Coastal communities with the highest percentage of fishers and fishing communities and prone to high impact. E.g. major fishing communities from Fond St. Jean to Soufriere/ Scotts Head

- Communities that were considered critical points for anthropogenic pressures on terrestrial and marine protected areas.
- Communities /areas with high level of land degradation and are hazard prone especially to climate change hazards
- Indigent, indigenous and vulnerable communities where biodiversity is threatened as a result of inadequate opportunities for livelihood development were selected in an effort to reduce stress on the biodiversity.
- An evaluation of communities engaged in previous SGP programmes was undertaken to evaluate the need for upscaling
- Areas where intervention can yield added value in terms of biodiversity conservation and social and economic development.
- In terms of management of pollution and use of chemicals, areas with minimal or limited garbage management and collection systems were selected.
- Areas with coral reefs and seagrass beds with a high propensity for coastal damage from infrastructure development and quarrying.

Areas subjected to the greatest impact of coastal degradation

- South-Western from Roseau, (port services), Rockaway, (high pollution area) Mero, impact on marine biodiversity (point and non-point sources of pollution) Batalie,
- Cabrits Marine Park to Capuchin, Savanne Paille and Cottage.
- Portsmouth, Glanvillea and on the North-East coast between Thibaud and Wesley- areas with endangered wetlands /coastal swamps.

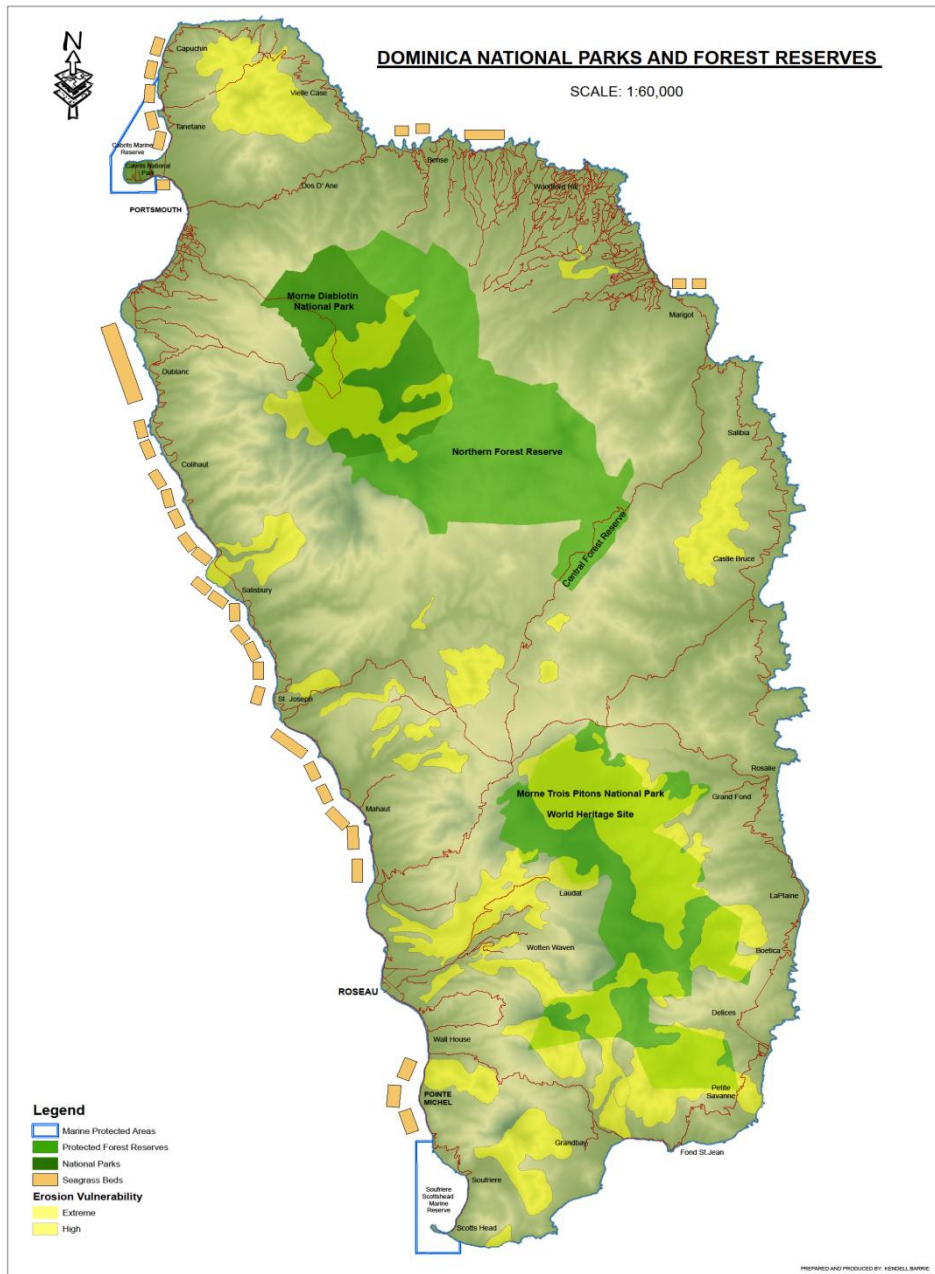
Communities adjacent to National Parks

With respect to the two (2) National Parks, MDNP and MTPNP-WHS, evaluation of identified target communities that were considered critical points for anthropogenic pressures on the parks as well as the engagement of these key target communities in the SGP are as follows:

With respect to MDNP, there are extensive agricultural activities in the Milton and Syndicate, Dyer and Morne Plaisance areas and these areas could be considered for agro-ecological activities. Some focus should be considered for the following communities that are within 2 km of the Park- Bioche, Colihaut, Dublanc, and Syndicate Estate in the parish of St Peter consisting of 1421 persons within an approximate area of 12.6 sq. mi. The number of households is 527 with an average household of 2.7 persons. In terms of poverty

levels statistical data categorize 31% of the population as being poor based on the following levels: 6% indigent, 12% poor, 17% all poor. 83% of the population is considered not poor.

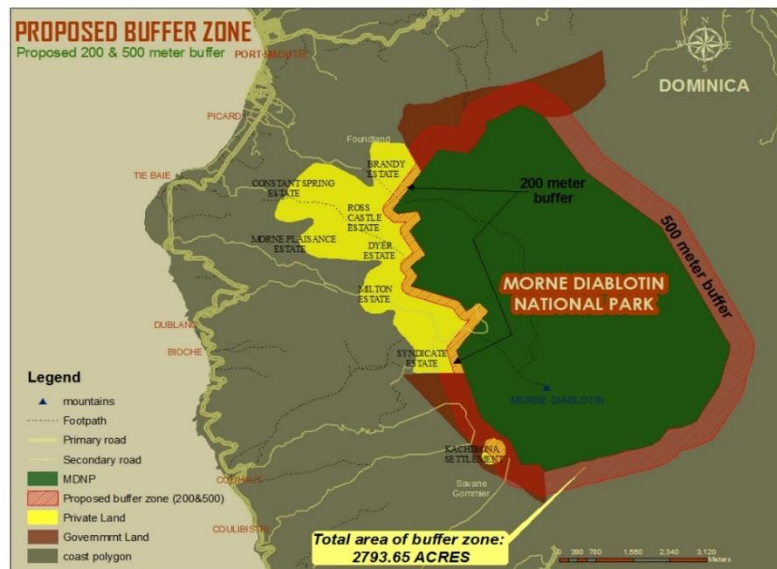
The map below shows the proposed focus areas within the landscape and seascape.



The majority of the population depends on farming and fishing. 22% of the population was skilled in agriculture and fisheries. The most productive pelagic fishery areas, apart from Marigot, are in these communities.

These communities are located on the narrow coastal plain and the population is vulnerable to both Coastal and river flooding during heavy rains and storm surges and has productive pelagic fishery areas that are impacted by quarrying, solid and liquid waste.

Proposed Buffer Zones

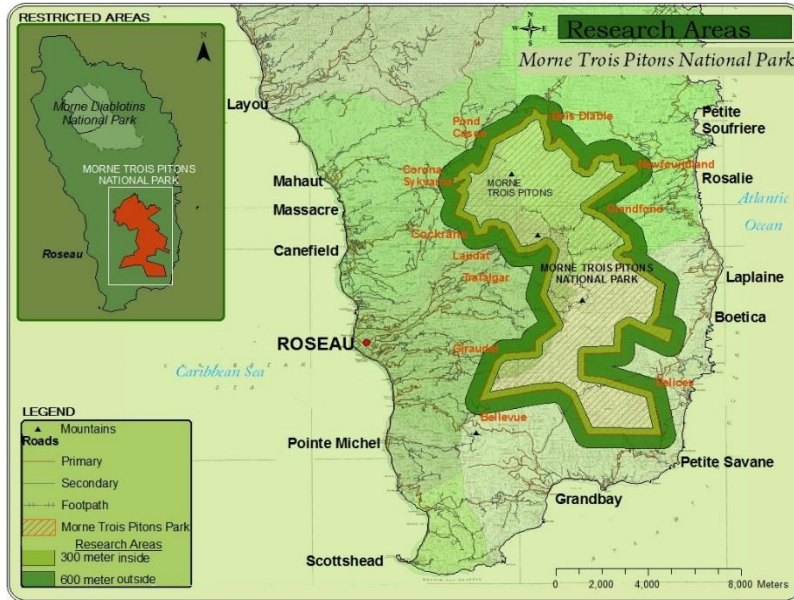


The proposed buffer zone, 200 m (656.2 ft.) has a total area of 2793.65 acres (1130.5 ha) of which 358.66 acres (145.2 ha) are privately-owned, cultivated land from the adjoining Syndicate, Dyer and Morne Plaisance Estates consists of three sub-zones (see map above):

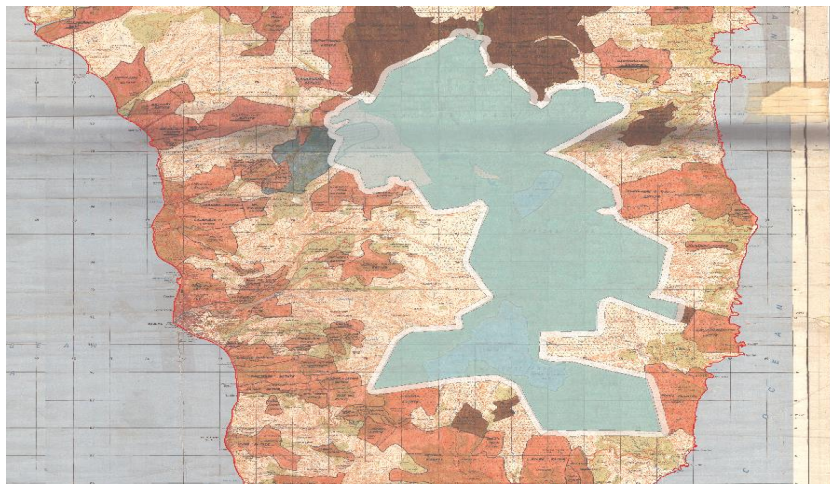
- Government- owned forest lands of the Northern Forest Reserve along the eastern and southern boundaries;
- Privately- owned forest lands on rugged terrain within 1 km. of the northern boundary; and,
- Privately- owned agricultural lands within 2 km. of the western boundary

With respect to MTNPWHS - Some communities with high anthropogenic activities are as follows:

Laudat and Cockrane, Boetica, areas of Morne Jaune/ Chemin Letang area, Laudat/ Freshwater Lake, Grand Fond, La Plaine, Heights of Delices to Victoria Fall, and in Petite Savanne, where farmers have traditionally planted Bayleaf used for Bay-oil. Most of the land within the northern and western boundaries of the park is privately owned, well cultivated lands. Farmers depend on their land for their livelihood.

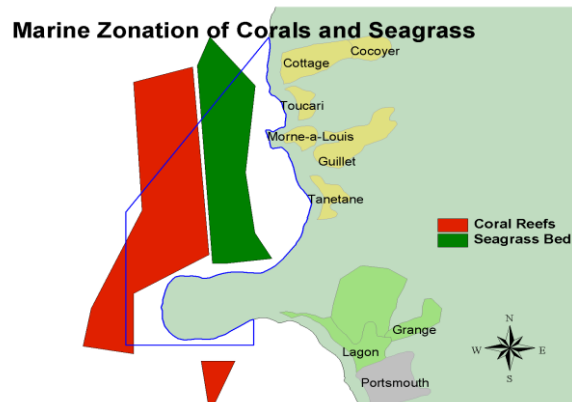


Communities around the MTPNPWS



Proposed buffer zone for the MTPNP – 200 m (656.2ft.) with a total acreage 3045 acres, (1232.3 ha)
Total area of private lands affected -722 acres (292.2 ha)

Cabrits National Park



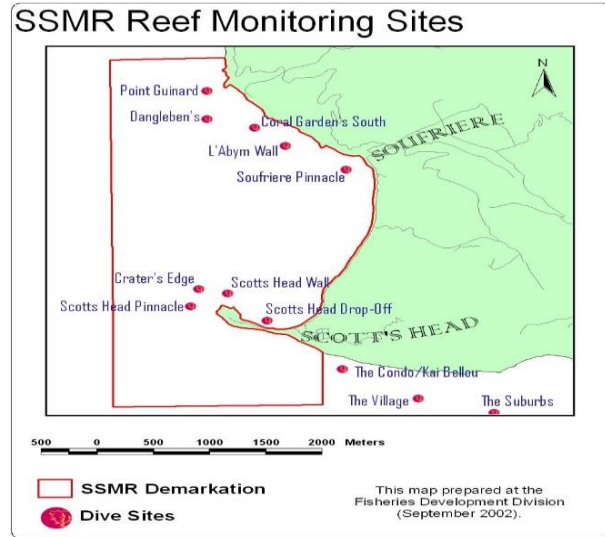
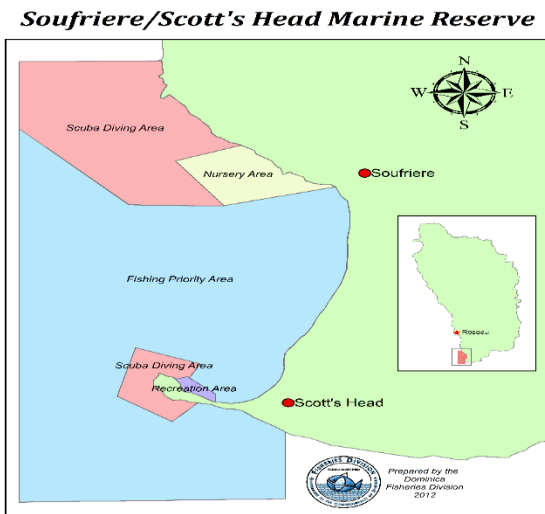
Cabrits National Park - Marine Component



Wetlands at Cabrits

Communities adjacent to the park include Portsmouth, Cottage, Toucarie, TanTane and Morne- a –Louis

Soufriere / Scott’s Head Marine Reserve, SSMR



Communities adjacent to SSMR- Soufriere, Scott’s Head, Gallion.

Annex 3 - Table 4: SGP contribution to national priorities / GEF-6 corporate results

1 SGP OP6 strategic initiatives	2 GEF-6 corporate results by focal area	3 Briefly describe the SGP Country Programme niche ⁸ relevant to national priorities/other agencies ⁹	4 Briefly describe the complementation between the SGP Country Programme UNDP CO strategic programming
1. Community landscape/seas cape conservation	<p><i>Maintain globally significant biodiversity and the ecosystem goods and services that it provides to society</i></p> <p><i>Synergy with government-funded projects</i></p>	<p>Conservation and sustainable management of environmentally sensitive terrestrial and marine ecosystems and protected areas</p> <p>Synergies with other projects Eastern Caribbean Marine Managed Areas Network ECMMAN Project TNC strengthening management of Cabrits Marine Section</p> <p>Caribbean Aqua Terrestrial Solutions- CATS GTZ- strengthening management of the Soufriere/Scott's Head Marine Park</p> <p>Disaster and Vulnerability Reduction Project DVRP - Forest Inventory and Bathymetric survey</p> <p>National Land Use Plan</p>	<p>UNDP-GEF-5 “Supporting Sustainable Ecosystems by Strengthening the Effectiveness of Dominica’s Protected Areas System”</p> <p>UNDP – Japan Caribbean Climate Change Partnership Project- includes climate resilient agro-pastoral practices , climate resilient energy pilot demonstration project</p>
2. Climate Smart Innovative Agro-ecology; Community landscape/seas cape conservation	<p><i>Sustainable land management in production systems (agriculture, rangelands, and forest landscapes)</i></p>	<p>Building climate resilient communities by strengthening the capacity of the communities to address climate change risks in food security in agriculture and fisheries and reducing vulnerability to desertification, soil loss, and the contamination of water resources</p> <p>Synergies with other projects</p> <p>Agricultural Investment Unit (2010) - A revolving grant fund for qualified farmers</p> <p>Global Climate Change Alliance (GCCA) project for Climate Change Adaptation and sustainable land management in the Eastern Caribbean. OECS/EU- 2016-2017</p> <p>Inter-American Institute for Cooperation in Agriculture, IICA - rainwater harvesting, upscaling composting project and hydroponics</p>	<p>UNDP-GEF-5: Supporting Sustainable Ecosystem by strengthening the Effectiveness of Dominica’s Protected Area System</p> <p>Japan – Caribbean Climate Change Partnership- UNDP Regional Caribbean, 2014 -2017</p> <p>Food and Agriculture Organisation of UNDP, FAO</p> <p>UNDP/UNV Differently Abled Disaster Risk Reduction Strategies (draft)</p> <p>UNDP / FAO /Fisheries Division- Climate Change Adaptation in the Eastern Caribbean Fisheries Sector Project 2016-2020</p>

⁸ “Niche” refers to the role or contribution that the Country Programme is best fitted to perform and for which the other stakeholders agree with

⁹ Describe only for those OP6 strategic initiatives which will be programmed by the SGP country programme.

<p>3.Low Carbon Energy access co-benefits</p>	<p><i>Support to transformational shifts towards a low-emission and resilient development path</i></p>	<p>Promote the development and utilization of indigenous sources of energy and renewable energy technologies so as to increase climate resilience, reduce poverty and enhance gender equality.</p> <p>OECS/ CGCCA “Climate Change Adaptation and Sustainable Land Management in the OECS Project”</p> <p>Government of Dominica – Geothermal Project</p>	<p>Japan – Caribbean Climate Change Partnership- UNDP Regional Caribbean, 2014 -2017</p> <p>UNDP GEF-5 MSP Low Carbon Development Path:</p> <p>The Caribbean Energy Efficient Lighting Project (CEELP)/ SIDS-DOCK Project (UNDP)SRO</p>
<p>5.CSO-Government dialogue platforms</p>	<p><i>Enhance capacity of civil society to contribute to implementation of MEAs (multilateral environmental agreements) and national and sub-national policy, planning and legal frameworks</i></p>	<p>Empower CSO and the private sector to constructively engage in national policy planning and implementation of national environmental policies and programmes</p> <p>Synergies with other Projects Environmental Coordinating Unit/Forestry, National Parks & Wildlife Division - Public Awareness programme</p>	<p>Sustainable Development Goals</p>
<p>6.Promoting Social inclusion (Grant-makers+)</p>	<p><i>GEF Gender Mainstreaming Policy and Gender Equality Action Plan and GEF Principles for Engagement with Indigenous Peoples</i></p>	<p>Develop programmes to encourage the participation of indigenous communities, vulnerable and marginalized populations and the youth in programme development and implementation</p> <p>Gender mainstreaming in collaboration with the Bureau of Gender Affairs, DNCW & CARIMAN</p> <p>Ministry of Kalinago Affairs and the Kalinago Council</p>	
<p>7.Global Reach for Citizens Practice-Based Knowledge Programme (Grant-makers+)</p>	<p><i>Contribute to GEF KM efforts</i></p>	<p>Connections between CPS and global priorities for the digital library and SSC Innovation Exchange Platform</p> <p>(i.e. examples of tested technologies, comparative advantage and experience of SGP country programme</p>	<p>UNDP CO Barbados and OECS GEF SGP Newsletter and TV series SIDS ADAPT</p>

REFERENCES

Commonwealth of Dominica - Second National Communication Under The United Nations Framework Convention On Climate Change, 2012 - Environmental Coordinating Unit Ministry Of Environment, Natural Resources, Physical Planning and Fisheries

Draft National Policy for Agriculture- Environment (Agri-Eco System) Policy Framework 2007- 2025

Draft National Energy Policy of the Commonwealth of Dominica - Prepared with assistance from the Organization of American States and the European Union 15 April 2014

David Farrell¹, Adrian Trotman¹ and Christopher Cox² -1. Caribbean Institute for Meteorology and Hydrology /2. Caribbean Environmental Health Institute - Drought Early Warning and Risk Reduction: A Case Study of the Caribbean Drought of 2009-2010

Consultative Document Notice of Proposed Rule Making Document Reference: 2015/002/NPRM-02 - DOMLEC's Integrated Resource Plan and Related Five Year Investment Plan March 2015 – Independent Regulatory Commission

Country Gender Assessment in Dominica Volume 1 - Rawinda Baksh & Associates 2014)

Commonwealth of Dominica- Intended Nationally Determined Contribution INDC (Communicated to the Secretariat of the United Nations Framework Convention on Climate Change (UNFCCC) on the 30thSeptember, 2015)

Dominica National Land Use Policy- Ministry of Environment, Natural Resources, Physical Planning and Fisheries – May 2014

FAO Food An Agricultural Organization of the United Nations- Dominica and FAO Partnering to Build Food Security and Resilience- January

GEF/UNDP United Nations Development Programme - Country: Dominica PROJECT Document

Low Carbon Development Path: Promoting energy efficient applications and solar photovoltaic technologies in streets, outdoor areas and public buildings in island communities nationwide (LCDP) 2016-2020- UNDP / Ministry of Health and Environment (MoHE) \$9,826,484.00

National Environmental Summary - Commonwealth Of Dominica (2010) UNEP Shawn S. Carter for John R A Wilson eco Natural Resources Management Consulting

Status of Women in Dominica - updated 2015 – To Lead, To Follow: The Powerful or the Powerless? Bureau of Gender Affairs

National Low Carbon Climate Resilience Strategy 2012-2020 (LCCRS)

UNDP Human Development Report 2014- Sustaining Human Progress- Reducing Vulnerabilities and Building Resilience