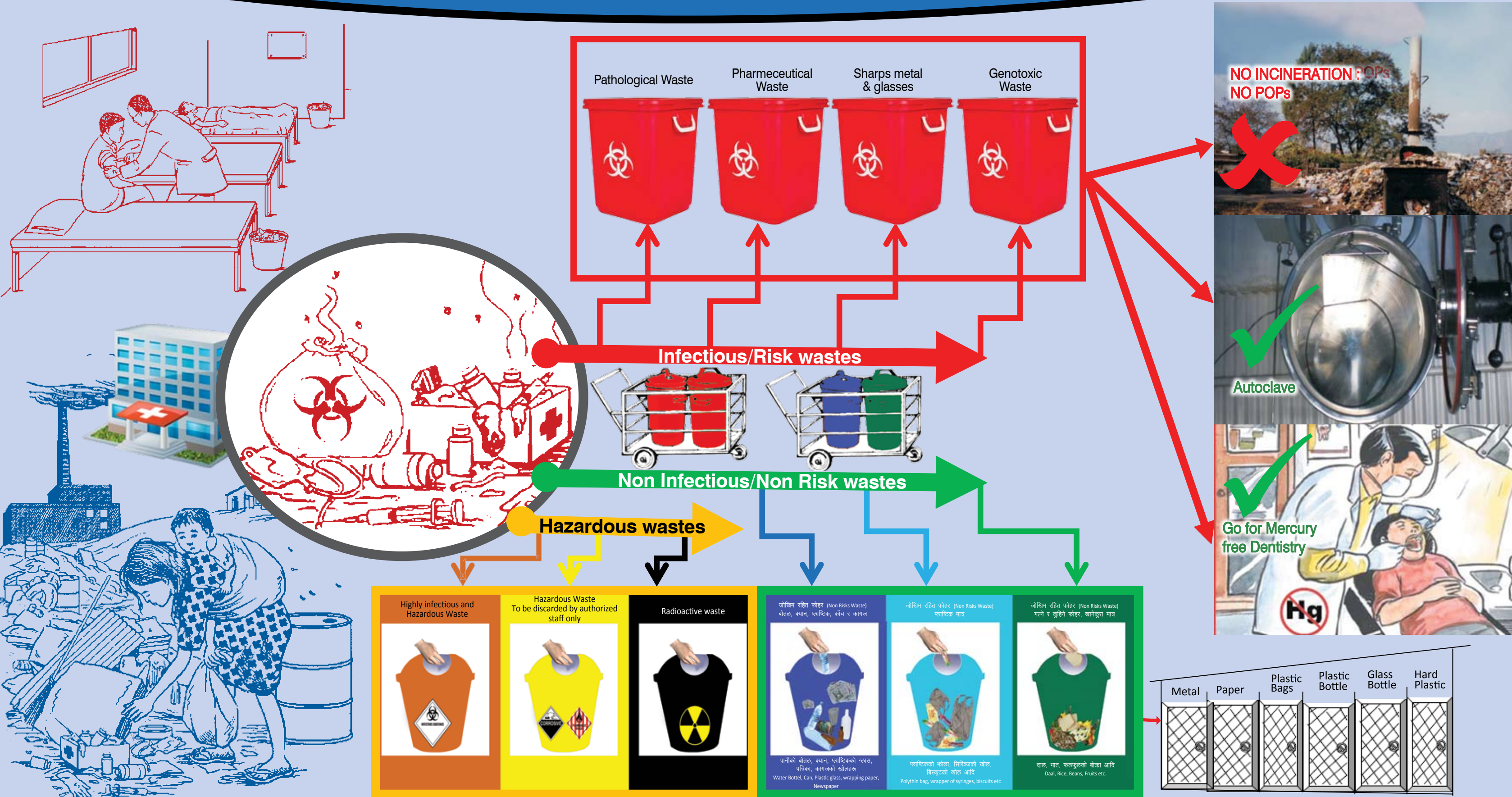


Environmentally Sound Health Care Waste Management, Mercury Free Health Care Services and Dentistry



“Separate at source, harness all possibilities of **Reduce, Reuse, Recycle, Recover** and be **Responsible** for **Environmentally Sound Health Care Waste Management** and go for **Mercury Free Health Care Service and Dentistry.**”

S.No.	Broad Categories of Wastes	Sub Categories of Waste	Color Code for Container	Description and examples
1	Non Risks Waste	Non-Risk Waste Biodegradable	GREEN	Leftover food stuffs, gardens, fruits peels, flowers etc.,
		Non-Risk Waste Recyclable	DARK BLUE	Non degradable, which can be recycled: plastic bottles, cans, metals, glass, plastics, paper, rubbers etc.
		Other non- risk HCW	LIGHT BLUE	That do not belongs to bio degradable and recyclable.
2	Health Care Waste Requiring special Attention	Pathological waste	RED	Human body parts, organs, human tissues, removed organs, amputated parts, bone marrow.
		Sharps	RED	Needles, glass syringes with fixed needles, scalpels, blades, glass, etc. which may cause puncture and cuts.
		Pharmaceutical waste	RED	Unused and date expired drugs find its ways into waste
		Genotoxic waste	RED	Waste with anti-neoplastic effect such as: alkylated substances, anti-metabolites, antibiotics, plant alkaloids, hormones, etc.

S.No.	Broad Categories of Wastes	Sub Categories of Waste	Color Code for Container	Description and examples
3	Infectious and Highly infectious waste	Danger! Hazardous Infectious waste	BROWN	Discarded items contaminated with blood and body fluids from clinically confirmed infected patients including cotton, dressings materials, soiled plaster, linen, bedding, swabs, gloves, syringes without needle, infusion equipment without spike, bandages, other materials contaminated with blood, dialysis equipment, blood from patients infected with HIV, viral hepatitis, brucellosis, respiratory tract secretion from patients infected with TB, anthrax, rabies.
		Danger! Highly infectious waste.	BROWN	Waste generated from the microbiological cultures, laboratory waste, such as sputum cultures of TB laboratories, highly concentrated microbiological Cultures.
8	Other hazardous waste	Danger! To be discarded by authorized staff only	YELLOW	Waste with high content of heavy metals, such as batteries, pressurized container, organic and inorganic chemicals
9	Radioactive waste	Danger! Radioactive waste	BLACK	Waste includes solid, liquid and gaseous waste contaminated with radionuclides such as Cobalt, Technetium, Iodine, Iridium, generated from in-vitro analysis of body tissue and fluid, in-vivo body organ imaging and tumor localization

Government of Nepal, Ministry of Health and Population (MoHP), through a secretarial level decision on 2069/11/21 (March 04, 2013) decided to ban **Import, Purchase and Use** of Mercury based equipment at all government sectors and also urge to do same by private sectors from fiscal year 070/71 (July 16, 2013).

नेपाल सरकार, स्वास्थ्य तथा जनसंख्या मन्त्रालय (सचिवस्तर) बाट मिति २०६९/११/२१ मा आ.व. २०७०/७१ देखि नेपाल सरकारले मर्करीयुक्त उपकरणहरू **आयात, खरिद र उपयोग** बन्द गर्ने र निजी क्षेत्रलाई पनि सो गर्न गराउन निर्णय गरेको छ ।

