

From Beacons of Hope...



...to Spotlights of Transformation

2017 ANNUAL REPORT

Prepared by:
GEF SGP UNDP (Saint Lucia)
Approved by the NSC on 17th May 2018

LIST OF ACRONYMS

B	Billion	IMF	International Monetary Fund
BC	Biodiversity Conservation	IW	International Waters
CARPHA	Caribbean Public Health Agency	LD	Land Degradation
CC	Climate Change	m	Millions
CD	Capacity Development	M&E	Monitoring and Evaluation
CCA	Climate Change Adaptation	NC	National Coordinator
CCM	Climate Change Mitigation	NSC	National Steering Committee
CDB	Caribbean Development Bank	OP5	5 th Operational Programme Period
CPMT	Central Programme Management Team	OP 6	6 th Operational Programme Period
CPS	Country Programme Strategy	PG	Planning Grant
CSO	Civil Society Organisation	POPs	Persistent Organic Pollutants
CO ₂	Carbon Dioxide	ppm	Parts per million
EDB	European Development Bank	SALCC	Sir Arthur Lewis Community College
FA	Focal Area	SDGs	Sustainable Development Goals
FAO	Food and Agricultural Organisation of the UN	SIDS	Small Island Developing States
FG	Full Grant	SGP	Small Grants Programme
GDP	Gross Domestic Product	UNDP	United Nations Development Programme
GEF	Global Environment Facility	UNEP	United Nations Environment Programme
GHG	Green House Gases	UNOPS	United Nations Office for Project Services
GIZ	Deutsche Gesellschaft für Internationale Zusammenarbeit	VALIRI	Vaughan A. Lewis Institute for Research and Innovation
GMO	Genetically Modified Organism	VRA	Vulnerability Reduction Assessment
GOSL	Government of Saint Lucia	WMO	World Meteorological Institute

TABLE OF CONTENTS

• List of Acronyms	ii	4.0	RESULTS – Environmental	18
• Who we are	iv			
• Acknowledgements	v	4.1	Landscapes	18
• Message from the UN Resident Coordinator & UNDP Resident Representative for Barbados & the OECS	vi	4.1.1	Canaries Landscape	18
• Message from the Chairperson of the National Steering Committee	vii	4.1.2	Mandelée to Fond River Landscape	19
• Executive Summary	viii	4.1.3	Soufriere Landscape	21
• My Community, Together	xi	4.2	Community Based Adaptation Projects	22
		4.3	Thematic Projects	24
		4.4	Other Projects	25
1.0 PURPOSE	12	5.0	CONTRIBUTION TO SDGs	27
2.0 CONTEXT	12	6.0	CHALLENGES & ACTIONS	27
2.1 Global Climatic Context	12	7.0	PARTNERSHIPS	30
2.2 Socio-Economic Context	13	8.0	LESSON LEARNED	30
2.3 New Approach & Methodologies	13	9.0	CONCLUSION	30
2.4 Changes in the National Steering Committee	14			
3.0 RESULTS – Investment, Economic & Social	14			
3.1 Number of Projects Funded	14			
3.2 Quantum of Investment	16			
3.3 Employment & Income	17			
3.4 Micro-Enterprise Revenue Generation	17			
3.5 Capacity Development	17			

WHO WE ARE

The Global Environment Facility Small Grants Programme (GEF SGP) was established in 1992 as a corporate programme of the GEF. It is implemented by the United Nations Development Programme (UNDP) and executed by the United Nations Office for Project Services (UNOPS), on behalf of the GEF partnership¹. Since 1992, the GEF SGP UNDP has invested over US\$550 million (XCD\$1.485 billion), in more than 20,000 projects in 132 countries in the Focal Areas of *Biodiversity Conservation, Climate Change Mitigation and Adaptation, Protection of International Waters, Prevention of Land Degradation and Sustainable Forest Management, and Chemicals and Waste*. The GEF SGP funds projects only through Civil Society Organisations (CSOs) with an emphasis on the poor and marginalised groups, and communities. The programme's objectives are to *achieve environmental sustainability, reduce poverty and build capacity*.

To achieve its mission of addressing global environmental problems at the community level, SGP has pledged to work in a *decentralised, transparent, participatory, inclusive, efficient, flexible and cost effective manner*, and to create partnerships with Government, the private sector, donors and groups with a similar mission. This translates into being responsive and proactive in addressing global environmental problems, through initiatives that cumulatively and synergistically create positive impacts in the environment and for communities.

The SGP programme is country driven and most project decisions are made by the National Steering Committee (NSC), which is a

volunteer group of nationals, representing the CSO sector (in the majority), Government, the private sector, and academia.

SGP uses the Country Programme Strategy (CPS) to be relevant and to focus on the unique challenges of each country where it operates. The CPS enables SGP to achieve impacts in a dynamic environment of competing needs, championed by many different stakeholders with varying agendas. It is the primary document which clearly articulates the platform for programming in each country. It is a guide to programme and project development, lays the basis for project implementation, monitoring and evaluation, and is a vehicle for developing and maintaining a results oriented, knowledge driven programme over an operational programme period which is usually 3 to 4 years.

For the programme period (2016 - 2019) or GEF-6, Saint Lucia has a total of US\$1.3 m (XCD\$3.51 m)² for disbursement in the form of Planning Grants (up to US\$5,000 per project), Full Grants (up to US\$50,000 per project) and through a Special Projects Window (up to US\$150,000 per project). CSOs are invited to apply for grants which fall within the defined priority areas for Saint Lucia as stated in the Country Programme Strategy.

During OP6, SGP's global strategic initiatives are in the areas of: (i) Community Landscape and Seascape Conservation; (ii) Innovative climate smart agro-ecology; (iii) Energy access co-benefits; (iv) Local to global chemical coalitions; (v) CSO-dialogue platforms; (vi) Social inclusion (gender, youth and indigenous people; and (vii) Contribution to global knowledge platforms.

¹ Includes The World Bank, UNDP, UNEP, FAO, EDB etc.

² The funds come from the following sources: (i) US\$800,000 from GEF

SGP CORE Resources; and (ii) US\$500,000 from the GOSL's STAR resources for OP 6.

ACKNOWLEDGEMENTS

The very nature of the GEF SGP UNDP programme and its *modus operandi* requires strong partnerships at all levels, horizontal and vertical, for any meaningful and long term success. For example, funded projects are a partnership with CSOs and the complex legal, institutional and organisational environments in Saint Lucia demand that GEF SGP works with myriad partners. GEF SGP has also learned that the very nature of the problems humanity faces today, compels it to develop partnerships. Partnerships are therefore not an option, but an urgent imperative for enduring success.

It is within this context that we extend our appreciation and acknowledge the consistent help and assistance from the Government of Saint Lucia through the Ministers, Permanent Secretaries and technical officers in the *Ministries of Education, Innovation, Gender Relations and Sustainable Development; the Ministry of Agriculture, Fisheries, Physical Planning, Natural Resources and Co-operatives; and the Ministry for Equity, Social Justice and Empowerment*. GEF SGP must also highlight the support given by the Hon. Dr. Gale T. C. Rigobert, who is the Minister with direct responsibility for the GEF. Caroline Eugene from the Ministry of Sustainable Development, must not be forgotten, because her support as the GEF Operational Focal Point for Saint Lucia is invaluable.

Continued support from programme colleagues at the CPMT in UNDP New York cannot be overstated. Led by the new Global Manager, Yoko Watanabe, and by our Programme Focal Point, Angelica Shamerina, we are always well informed and in the loop. To our colleagues at UNOPS Copenhagen, led by Kristoffer Kappy, we also send our appreciation for guiding us through the financial and legal aspects of our programme. In the Caribbean, we must highlight the continued support of Stephen O'Malley, the UNDP Resident Representative and UN Resident Coordinator to Barbados and the OECS. We shall miss him when he departs later this year. The support from the UNDP Sub-regional Office, in particular from Perry Parris, Sonia Headley-Griffith, Jawara Wells and Tamaisha Eytley must be highlighted. Appreciation is also due to the officers of the UNOPS Saint Lucia office for the efficiency of payments to grantees and service providers.

The greatest support GEF SGP receives come from the volunteers on the NSC led by Barbara Graham. They are a source of technical support and encouragement when the going gets challenging. Barbara's quiet optimism is always a soothing balm. Our hats are off to them for their sterling volunteer contributions.

Finally, we thank our many grantees who we work with in very challenging environments. Their success is our success and together we match towards a vision of sustainable and equitable development guided by the SDGs.

Giles Romulus & Anela Jean-Marc – GEF SGP UNDP Team/Staff

**Message from the UN Resident Coordinator and
UNDP's Resident Representative for Barbados and the OECS
Mr. Stephen O'Malley**

I take great pleasure in introducing this Annual Report to its readers. During my five years as UNDP's Resident Representative for Barbados and the Organization of Eastern Caribbean States, I have been able to witness the continued development of the Saint Lucia GEF Small Grants Programme (SGP). The GEF SGP staff, working closely with the Steering Committee, has been able to introduce innovative ways of designing and assessing projects, making sure that funding goes to the projects which will have the greatest impact, and has paid close attention to monitoring progress and reporting on results.



This report is a testament to the hard work and collaborative efforts of the GEF SGP Team, including the staff and the Steering Committee, and all of the grant recipients. It demonstrates the strategic focus of the Saint Lucia GEF SGP, as well as the practical application of this focus.

As I prepare to end my tour of duty in the region, I would like to express my personal thanks to all who have contributed to the continuing success and development of the Saint Lucia GEF SGP.

Message from the Chairperson of the National Steering Committee

Dr. Lyle Barbara Graham

The 2018 Annual Report is an encouraging indicator of progress towards the creation of resilient communities. In so doing, it provides a sound basis for a positive perspective on the possibilities for change in the livelihoods security options and income generation potential of vulnerable and marginalized populations, as well as in more favorably resourced groups and sectors.

Focused on building adaptive capacities in natural resource management and with an awareness of the predictions for change in environmental services, SGP-Saint Lucia grantees challenged the National Steering Committee to review several projects in the area of traditional knowledge transfer, research, innovation and adaptation practices, among others. The NSC was well rewarded with the demonstrated success, some early and already showing good indication of social and economic returns, as documented in this comprehensive report.



The NSC would therefore like to acknowledge the privilege afforded to its membership to gain an increasing understanding and appreciation of the intellect on sustainable development concepts, that exists in our communities and that is ready to be supported and harnessed to reduce risks at household and community levels. This has resulted in an increasingly intense responsibility within the NSC to its obligations and commitments to support the creative partnership arrangements and achievements observed, project by project.

We would therefore like to use the opportunity provided through this Statement, to encourage readers of this document, to continue through to the very end as this is where you could identify your own role in this process. This is where the SGP staff reaches out to potential volunteers and mentors with the experience and expertise in the area of building capacity and capability within community based organizations. They also reach out to appropriate institutions to show increased awareness and accountability, through deliberate and transparent actions to enhance efficiency and effectiveness of the impact of the projects for longer term prosperity.

EXECUTIVE SUMMARY

**We'll hold hands, together
Laugh and pray, together
Sit and discuss community together,
To know how best we can work, together.**

Introduction: Merlisha's poem *My Community, Together*, which was read by Kesi, in many ways summarizes the core strategy required to address the complex problems facing the world today. The English Poet John Donne, in 1624 expressed this sentiment even more graphically when he wrote in his epic poem, ***No Man is an Island***, the following:

No man (woman) is an island entire of itself; every man is a piece of the continent, a part of the main [parenthesis added]

This poetic truism was captured long before the appearance of man on the earth at 5 minutes to midnight on the geological time scale and long before the challenges of climate change became an omnipresent reality with existential threats. The immutable law remains, we live in a biosphere which is an integrated system, in which the bad anywhere could eventually neutralize the good elsewhere. We must therefore state clearly, that the many problems that SGP faces every day, requires a ***together approach*** as our poets recommend and admonish.

Investment and Results: During 2017, the approach and methodology we used changed to a *landscape or ridge to reef approach*, to enable a focusing of resources for more sustainable results. SGP also introduced Vulnerability Reduction Assessments (VRAs) at the community level along with the testing of Resilience Indicators. Though too early to determine the results, SGP has observed indications of positive trends.

From January to December 2017, SGP funded 17 projects in Saint Lucia, compared to 5 in 2016, which represented an investment of US\$1.3 m (XCD\$3.5m) and a co-financing ratio of 1:2.17 from 1:1.34 in 2016. This brought the total number of projects approved to 74 between October 2012 and December 2017, which is the duration of the Saint Lucia country programme. In terms of investment, the total at December 2017, was US\$3.6 m or XCD\$9.8 m.

With an investment of US\$1.3m. a total of 222 persons were employed receiving an income of US\$131,944 (XCD\$356,249) in areas varying from the legal aspects of business incorporation to graphic arts, research and enumeration, to name a few. In 2017, a total of 885 persons were trained, in areas ranging from sustainable sea moss farming to project management to website maintenance to First Aid and to elements of gastronomy.

Environmental Results: The results are presented here under four categories as follows: (i) Landscapes; (ii) Climate Change Adaptation; (iii) Thematic Projects (projects outside the landscapes); and (iv) Other (projects funded before the commencement of OP 6 in 2016).

Synopsis of Environmental Results: SGP is programming in three landscapes where it hopes to invest 70 – 80% of its funds. During 2017 the following results were achieved:

- (i) **Canaries Landscape:**
- Increase in honey bee hives and bee population;
 - 16 persons trained in apiculture;

- 33 young people trained in organic methods and sustainable agriculture;
- 4 young persons attained diving certificates
- Coastal water quality determined
- Sustainable development newsletter circulated/
- 1 Km of river reforested.

(ii) Mandelée to Fond Landscape:

- Livelihoods for 80 seamoss farmers created.
- Vulnerabilities within the Fond Watershed determined and a plan of action designed and being implemented.
- Resilience of the Fond Watershed and the population determined.
- Capacity assessment of the Malgretoute Action Trust and Premium Coco Producers determined and an action plan developed for addressing them.

(iii) Soufriere Landscape:

- Significant deterioration in the quality of water in the river and coastal zone determined;
- The extent of pollution from pig pens confirmed in the Ravine Claire Area.
- Sustainable micro enterprise established for young women based on indigenous fruits.
- Mechanism established for coordination and collaboration among stakeholders in the Soufriere Landscape.
- Grants given to build capacity at Palmiste; improve participatory management at Fond Gens Libre; and to address the issue of invasive species.
- Exploratory work commenced to determine the feasibility of establishing an Agro-Tourism Park in the Upper Watershed.

- Water pollution abatement interventions commenced by the SMMA.

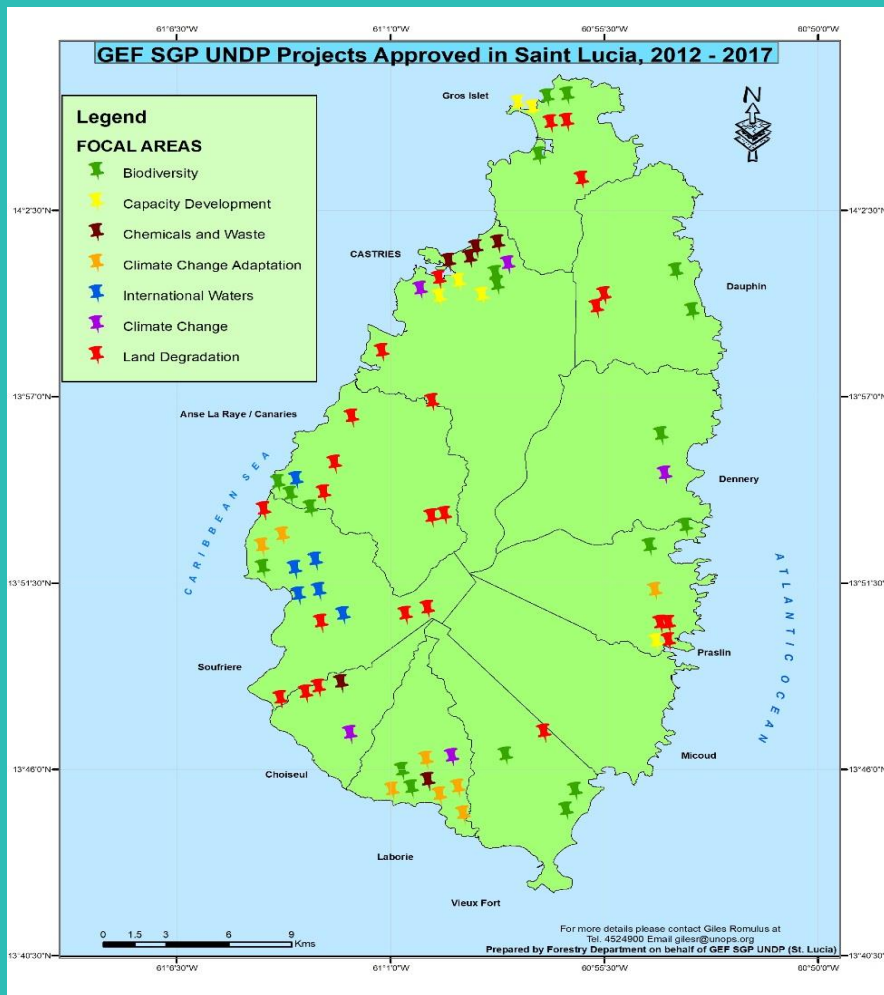
(iv) CBA Projects: Five projects were implemented with 4 completed at December 2017. The results were as follows:

- Climate smart food production capacity significantly increased in La Pointe, Micoud.
- 32 households with rain water harvesting systems and a 67 day post disaster water supply for 128 persons established.
- Desalination prototype accepted for international replication.
- 12 farmers trained in natural beekeeping; and
- Community Land Use Plan and Guidelines completed for Laborie.

Among the other projects are the significant work completed for the effective management of the Laborie Bay; the establishment of a 3 acre farm at Belle Vue, managed by women who are using organic principles; the training of 122 persons in basic toxicology; the increase in use of Algas Tonic by farmers in Saint Lucia; and the establishment of the first rural sustainable energy cluster in Saint Lucia.

Challenges and Actions: The capacity of CSOs in Saint Lucia remains a major challenge along with the decreasing in water quality in the coastal zone. Observations and actions are described in the report.

Conclusion: This report signals the shift in GEF SGP UNDP (Saint Lucia) to a more resilience approach to programming. The project outputs are many and confirms the continuing impact of GEF SGP UNDP in Saint Lucia. With the wide acceptability of the programme now, its impacts are expected to keep on growing in order to become transformative. What is evident to SGP is that we must address these problems, TOGETHER!



74
PROJECTS
approved

OCTOBER 2012 - DECEMBER 2017.

Some of the data used to prepare this map is based on the office locations of the CSOs in urban centres like Castries and Gros Islet. For example, a CSO in Castries with a Capacity Development Project can be implementing the project throughout Saint Lucia. It must also be noted that most projects have a capacity development component for implementation.



**Merlisha
Hippolyte (poet)**



**Kesi Rodney
Presenter of Poem**

(This poem was presented at the launching of a community project at Malgretoute, Micoud).

MY COMMUNITY, TOGETHER

We'll hold hands, together
 Laugh and pray, together
 Sit and discuss community, together
 To know how best we can work, together.
 We will talk about the development, together
 We will teach the youth, together
 Fill their hearts with joy, together
 And help each other, together
 Share our thoughts, together.
 We will discuss our actions, together
 And welcome people, together
 Comfort each other, together.
 Plan activities for youth, together
 And see a brighter future for them, together.
 We will encourage each other, together
 And share community secrets, together.
 If you didn't know, let me tell you that "together"
 Has become my community's theme word.
 So . . . if we are here together, please let's stay together;
 We'll love and care for each other together;
 We'll celebrate, share and rejoice my community's success today;
 Together!

1.0 PURPOSE: Every year when we sit to write this annual report, there is a deep and solemn reflection we go through, because we are aware that in the biosphere, the good in one location is easily negated by the bad in another location. Humans have yet to understand fully that in an integrated system, we are each other's keeper. This truism, compels us to go on with a hope that one day our inter-connectedness will cause us to act with each other in mind, *id est*, "together" at all spatial and socio-economic levels. Partnerships and collaboration we have concluded, is the core of any strategy dealing with existential threats from meta-problems³ - a fact our young poet has alluded too.

Notwithstanding this reality, we are always pleased to document our progress and results for learning, accountability and transparency reasons. It is therefore with a sense of obligation and commitment we present the Annual Report for the period January to December 2017.

2.0 THE CONTEXT: During 2017, the Saint Lucia GEF SGP UNDP programme worked within a context in which the global climatic conditions were deteriorating and the socio-economic conditions were still very worrying. The programme also introduced and expanded the use of new approaches and methodologeis, and said special thanks to two (2) members of the NSC who left volunteer service after 6 years.

2.1 Global Climatic Conditions: Nothing emphasises more than ever the interconnectedness of the biosphere than the global climatic system. *The World Meteorological Organisation's Report for 2017*⁴ documents the world's deteriorating report card, with the following observations:

- (i) warmest non-El Nino year with a global mean tempearture of 1.1°C above pre-industrial levels;

³ *Problems, Solutions and Strategies – A Contribution to the Theory and Practice of Planning* In **American Institute of Planners No. 39, May 1973.**

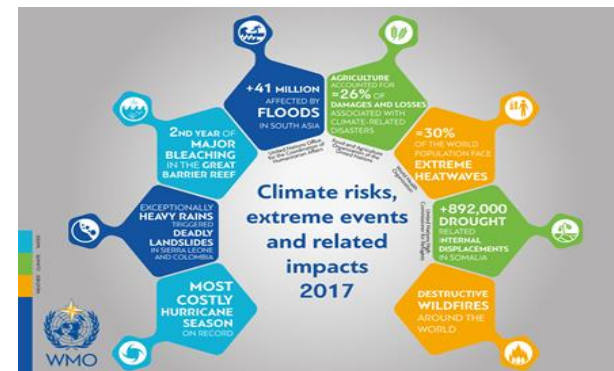
⁴ <https://public.wmo.int/en/media/press-release/state-of-climate-2017-%E2%80%93-extreme-weather-and-high-impacts>

- (ii) increasing levels of CO₂ emissions, reaching 400 ppm, compared to the previous 800,000 years, when CO₂ emissions were between 180-280 ppm;
- (iii) rising sea level;
- (iv) increase in global heat content in the biosphere; and
- (v) sea Ice well below average at both Poles.

Figure 1 summarises the Global Climatic impacts in 2017.

Perhaps no other period of time brings to our attention the impacts of CC, than the annual hurricane season in the Caribbean. For example, in one short period of less than 24 hours, the Island of Dominica suffered destruciton from Hurricane Maria, equivalent to US\$1.3 b. (XCD\$3.51b) or 224% of its GDP. By any measure, this was destruciton on a mega scale. As we present this report, the 2018 hurricane season has started, with Dominca no where close to recovery, while a deep sense of concern and apprehension descends on the region.

Figure 1
Global Climatic Impacts⁵



⁵ <https://public.wmo.int/en/media/press-release/state-of-climate-2017-%E2%80%93-extreme-weather-and-high-impacts>



**Preparing Relief Supplies for Colleagues in Dominica
(Aftermath of Hurricane Maria, September 2017)**

2.2 Socio-Economic Conditions: During 2017, there was an increase in the population by 0.26%, a GDP growth of 2.97%, an increase in the Debt to GDP ratio by 1.3%, while employment declined slightly, but still remained over 48% for the youth, against a national average of 20.2% (Table 1).

With declining climatic conditions, a poverty rate of over 28%, a significant percentage of the population living from pay cheque to pay cheque, and a less than stellar performance of the economy, Saint Lucia's vulnerability index is trending upwards. Every effort must therefore be made to increase resilience at all levels, including the community level, which will be best done, when we fully understand and act in a manner in which the economy is part of the environment and not *vice versa*.

⁶ GOSL (2018) *2017 Economic and Social Review*. Saint Lucia: Ministry of Finance, Economic Growth, Job Creation, External Affairs and the Public Service

⁷ GOSL (2018) *ibid*.

⁸ IMF (2018) Staff Concluding Statement of the Mission for the 2018 Article IV Consultation.

⁹ GOSL (2018) *ibid*.

**Table 1
Some Social and Economic Indicators
(2016 and 2017)**

VARIABLES	YEARS		% Change
	2016	2017	
Population ⁶	173,966	174,417	0.26%
Real GDP at Market Prices (million US\$) ⁷	1291.15	1329.56	2.97%
Debt/GDP Ratio ⁸	69.2%	70.5%	- 1%
Unemployment Rate (national) ⁹	21.3%	20.2%	-1.1
Youth Unemployment in Saint Lucia ¹⁰	49.9%	48%	-1.9
Poverty Rate (2005-2006)	28.8% (Poverty) 1.6% (Indigence)		

2.3 New Approach and Methodologies: The increasing and diverse vulnerabilities of Saint Lucia, have motivated the GEF SGP UNDP programme to try new approaches and methods, which can help to determine the degree of resilience of communities. The approach and methods tested and used in 2017 are as follows:

- (i) *A Landscape Approach:* this approach helps to create greater spatial impact with a higher probability of transformative development, because it conforms to nature's 'Planning Units'¹¹, allows us to more efficiently cluster projects for impact and it is results driven. In using this approach, GEF SGP has allocated

¹⁰ <https://www.statista.com/statistics/813033/youth-unemployment-rate-in-St-lucia/>

¹¹ Watersheds

close to 70% of its OP 6 funds to three landscapes, i.e., the Soufriere Landscape; the Canaries Landscape; and the Mandelele to Fond River Landscape¹².

(ii) *Vulnerability Analysis*: SGP has now applied VRA analysis to five projects in Saint Lucia, in the communities of Mon Repos, Bouton, Choiseul and Laborie. For each project, SGP determined the VRA score at the beginning of the project (baseline), at the mid-way point and at the end. These scores give an indication of the built resilience resulting from the project, contributes to a more profound analysis of project impacts and indicates where future interventions should be; and

(iii) *Resilience Indicators*: during the reporting period, SGP introduced and tested resilience indicators as pioneered by the *The United Nations University, Institute for the Advanced Study of Sustainability*¹³. This approach uses 20 indicators (qualitative and quantitative) to capture the ecological, agricultural, cultural and socio-economic conditions as observed, perceived and experienced by local communities in production or socio-ecological landscapes. This methodology was tested for the first time in the Fond Watershed on the East Coast of Saint Lucia in five broad categories as follows:

- Landscape/seascape diversity and ecosystem protection;
- Biodiversity (including agricultural biodiversity);
- Knowledge and Innovation;
- Governance and social equity; and
- Livelihoods and well-being.

These methods are helping GEF SGP UNDP to become more responsive to the challenges caused by increasing vulnerability to natural and anthropogenic factors.

¹² GEF SGP UNDP (2015) *SGP Country Programme Strategy for OP 6: Saint Lucia*: GEF SGP UNDP

¹³ UNU-IAS, Bioversity international, IGES and UNDP (2014) *Toolkit for the*

2.4 Changes in the National Steering Committee (NSC): Another change that occurred in 2017 was at the organisational level, with the resignation of two members. By the end of the year, we had replaced the resignees with two experts in communications, and culture in sustainable development. SGP is now convinced that the skills set of the NSC is more diverse than ever and re-emphasizes the importance of behavioural change in addressing SD issues.

3.0 RESULTS – Investment, Economic and Social

3.1 Number of Projects Funded: During 2017, the programme invested in seventeen (17) projects, representing a 240% increase from 2016, when only five (5) projects were approved. That brought the number of projects funded between October 2012 and December 2017 to seventy-four (74). Figures 2 and 3; Table 2; and Map 1.



White-breasted thrasher
(From sub-species to endemic species)

photo © Tseng Chiu-wen Hank

A GEF SGP funded Project

Indicators of Resilience in Socio-Ecological Production Landscapes and Seascapes

Figure 2

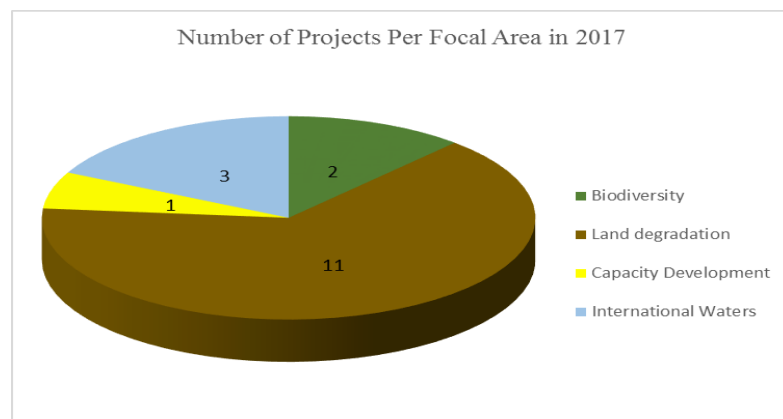
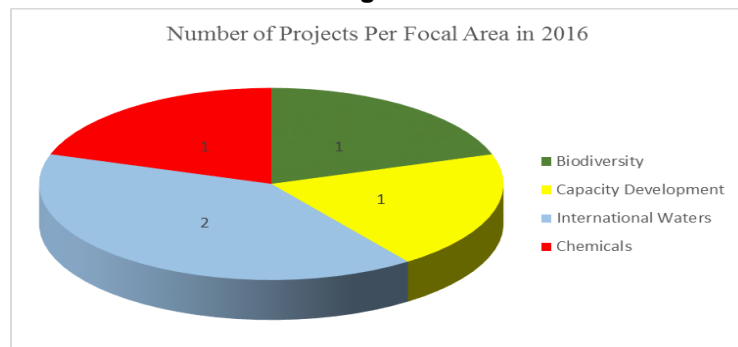


Table 2

**Total Number of Projects Funded
(Oct-2012-Dec. 2015; 2016; & 2017.)**

October 2012 – December 2015	2016	2017	Total
52	5	17	74
% Change from 2016 – 2017	240%		

Among the projects funded, there was a significant increase in Land Degradation (LD) projects. LD projects are those which focus on sustainable land management, the integration of organic principles into farming, and climate smart agriculture. This trend is perhaps reflective of the skills set and capacity of CSOs applying for grants. We also note that of the 17 projects approved, eight (8) or 47% used a ridge to reef approach¹⁴ in the three landscapes selected for OP 6. We note further that two of the projects involves significant research in the areas of climate smart agriculture and are multi-focal area projects, combining CCM and LD approaches. For example, the use of solar as the primary source of energy for Saint Lucia's first medium scale community aquaponics project in Bois d'en, near the Gros Piton.

¹⁴ A comprehensive approach coinciding with the watershed and

extending to the coastal zone or the offshore reefs.

Map 1



3.2 Quantum of Investment: The total value of projects funded in 2017 was US\$1.3 million (XCD\$3.51 million), representing a 283% increase from the 2016 figure of US\$0.34 million (XCD\$0.92 million). The investments in 2017 increased the total for Saint Lucia to US\$3.64 million (XCD\$9.83 million) at December 2017. (Table 3).

Table 3
Total Value of Projects
(Oct-2012-Dec. 2015; 2016; & 2017)

October 2012 – December 2015	January to December 2016	January 2017 to December 2017	Total Investment to December 2017
US\$ 2,001,172	US\$339,854	US\$1,300,570	US\$3,641,596
XCD\$5,403,164	XCD\$917,606	3,511,539	XCD\$9,832,309
% Change from 2016 – 2017	282.68%		

One of the most important investment ratios for the GEF SGP UNDP in any country, is the Co-funding ratio, or the ratio of GEF SGP investment to co-funding (cash and in-kind). The co-funding ratio for 2017 increased to 1:2.17 from 1:1.34 in 2016, representing a 62% increase. That means that for every US\$ 1 invested in Saint Lucia in 2017, US\$2.17 was raised in co-funding, which is above the required ratio of 1:1. Overall however, since the inception of the programme in 2012, the co-funding ratio is on average 1:1.60 (Table 4) which is not too comfortable, because it gives less room for flexibility, i.e., we have less room to fund projects in very poor areas where co-funding ratios cannot be met for various reasons.

Table 4

Co-Financing Ratios
(Oct-2012-Dec. 2015; 2016; & 2017)
(US\$)

Years	Oct. 2012 – Dec. 2015	Jan. – Dec. 2016	Jan. – Dec. 2017	Total (2012-2017)
GEF SGP Investment	2,001,172	145,529	410,200	2,556,901
Cash Co-funding	1,423,222	68,123	637,278	2,128,623
In-kind Co-funding	1,586,602	126,202	253,092	1,964,896
Co-funding Ratio	1:1.50	1:1.34	1:2.17	1:1.60

3.3 Employment & Income: A total of 222 persons (50% men and 50% women) were employed through active projects during the reporting period. Comparatively, employment was 142 persons (52 women and 90 men) in 2016. Between October 2012 and December 2017, GEF SGP was responsible for the employment of 1021 persons over the short term, i.e., during the project cycle (Table 5).

GEF SGP is also pleased to announce that some of the completed projects have started to realise their potential of creating long term employment. One example comes from the community of Praslin where the seamoss plant has become a major income source for 43 persons in 2017. Though this is an area where our statistics are still lacking, trends suggest that an economic study could confirm a net positive impact.

Of the 28 project reports received in 2018, a total of US\$131,944 (XCD\$356,249) was paid as income to various service providers, which varied from consultants with specialist skills to handymen and project managers. At December 2017, the primary areas of employment were in the areas of apiculture, mentoring, publishing, video production, legal aspects of incorporating business, researching, enumerating, and graphic design. Employment was also created in the areas of catering,

transportation, and secretarial services. Such an investment is making a significant difference to family incomes in rural Saint Lucia.

Table 5

Employment & Income
(Oct-2012-Dec. 2015; 2016; & 2017.)

VARIABLES	Oct. 2012 – Dec. 2015	Jan. – Feb. 2016	Jan. – Feb. 2017	Total (2012 – 2017)
Women (No.)	287	52	111	450
Men (No.)	370	90	111	571
Total (No)	657	142	222	1021
% Change between 2016 and 2017	81.79%			
Income (US\$)	220,554	72,579	131,944	425,077

3.4 Micro Enterprise Revenue Generation: Though this is an underreported area in our data gathering, the potential of some of our projects are quite evident. For example, the Praslin seamoss factory produced approximately 10,885 Kg of raw seamoss in 2017, which generated a gross income of US\$10,939 (XCD\$29,536) and a net income of US\$4093 (XCD\$11,050). We believe that the only way we can determine the real revenue impact of funded projects is to undertake a separate study.

3.5 Capacity Development: The GEF SGP UNDP programme continues to contribute to the development of the capacity of groups in Saint Lucia. In 2017, 865 persons (416 men & 449 women) were trained, representing an increase of 48% over the number for 2016 (Table 6). Between October 2012 and December 2017, the SGP was

responsible for training 4019 persons in communities around Saint Lucia, comprising 1968 men and 2051 women.

Table 6

Capacity Development – Number of Persons Trained
(Oct-2012-Dec. 2015; 2016; & 2017.)
(Numbers)

VARIABLES	Oct. 2012 – Dec. 2015	Jan. – Dec. 2016	Jan. – Dec. 2017	Total (Oct. 2012 – Dec. 2017)
Men	1289	263	416	1968
Women	1279	323	449	2051
Total	2568	586	865	4019
% Change 2016 & 2017	47.61%			

The areas of training were varied and included the following (i) organic farming; (ii) sustainable sea moss farming; (iii) aquaponics; (iv) endangered species management (*Bothrops caribbaeus*); (v) mangrove assessment; (vi) water quality testing; (vii) diving; (viii) management planning; (ix) project management (x) stakeholder analysis and management; (xi) proposal writing (xii) computer training (xiii) website maintenance; (xiv) communications (xv) basic toxicology; (xvi) First Aid; and (xvii) gastronomy.

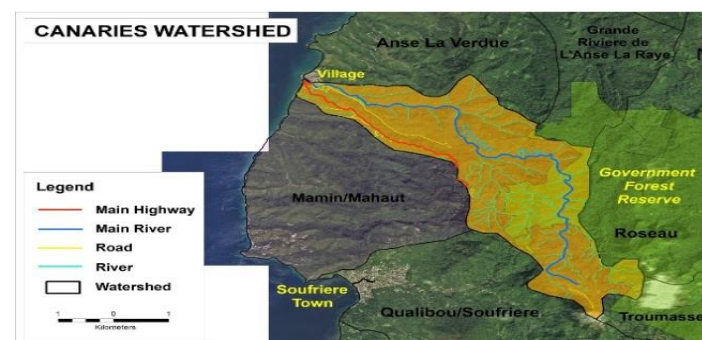
GEF SGP regards capacity development as the most critical element of resilience building.

4.0 Results – Environmental: In keeping with our new approach and methods, the results are presented here in three broad sections as follows: (i) Landscapes; (ii) Climate Change Adaptation; (iii) Thematic Projects (projects outside the Landscapes in keeping with OP 6 themes); and (iv) Other (referring to ongoing projects funded before the commencement of OP 6 and outside the landscapes).

4.1 Landscapes: The results are presented in each landscape while also identifying the focal area impacts.

4.1.1 Canaries Landscape:

Map 2



During the period January to December 2017, there were four projects in progress categorised as follows: (2) were in the Biodiversity Focal Area and were approved in 2014 and 2017; one (1) in the Land Degradation Focal Area and approved in 2015; and one (1) in the International Waters Focal Area and approved in 2015. At December 2017, the total investment in that landscape was US\$289,277 (XCD\$781,048).

The results from projects in 2017 were as follows:

- Number of bees foraging in the Canaries River Valley increased by the establishment of three (3) new apiaries which produced 5 gallons of honey on the first production run. Healthy bees are an excellent indicator of environmental quality.
- 16 persons (10 men & 6 women) trained in apiculture and managing the apiaries in Canaries.
- 33 young people (23 men and 10 women) trained in organic methods and principles as part of the initial stages of establishing a 10 acre farm at Anse La Liberté, Canaries.
- Four young people (2 men and 2 women) have attained their diving certificates in preparation for the establishment and management of a coral reef restoration programme in Canaries.
- Water pollution levels determined for the river and the coastal zone at Latchie in Canaries. The results were beyond acceptable standards.
- First community Sustainable Development newsletter published and widely circulated as a means of communicating with Canarians within and outside Saint Lucia.
- 1 Km of the Canaries River Bank reforested in partnership with students from the Canaries Primary School.

4.1.2 Mandelée to Fond River Landscape (Map 3):

Map 3



During the reporting period, there were six projects operating within the landscape, comprising of one (1) in the Biodiversity Focal Area which was approved in 2014 and ended in 2017; three (3) in the Land Degradation Focal Area which were approved in 2017 and 2018; one (1) in the Capacity Development Focal Area which was approved in 2018; and one CBA project which was approved in 2014 and ended in 2016. The total investment at December 2017 was US\$427,264 (XCD\$1,153.613).

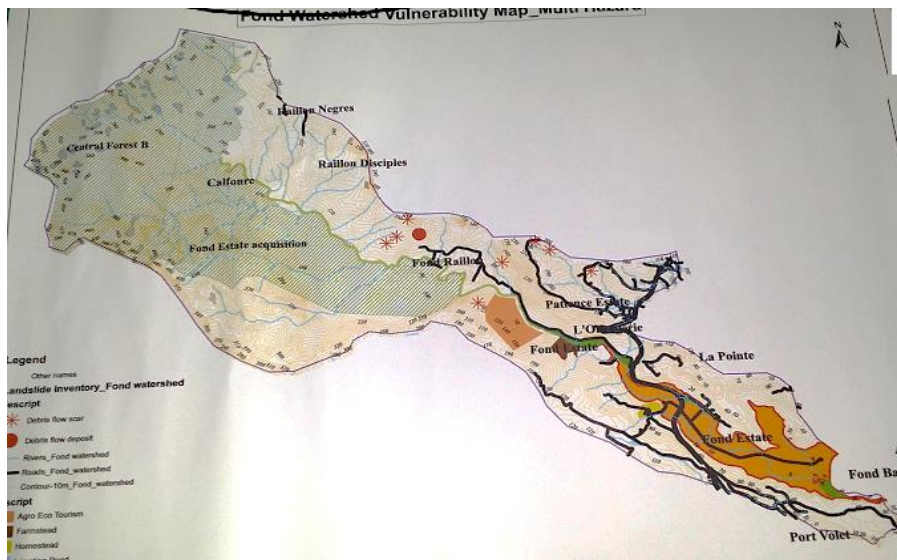
The project results for the Mandelée to Fond River Landscape were as follows:

- Seamoss factory partially operational and producing dry seamoss for the local market;
- Extensive seamoss farms established with over 80 farmers dependent on coastal farms for a part of their livelihoods;
- Vulnerabilities within the Fond Watershed determined through vulnerability and multi-hazards assessment study (Map 4);

- Project developed, funded and being implemented to address those vulnerabilities and to support the cocoa farmers in the area;
- Resilience score of the Fond Watershed and the community was determined and it is not very good. At a score of 52 over 100, it is considered in the low to medium level, which means that many more interventions are required to build resilience.
- Capacity assessment of the Malgretoute Community Action Trust and the Premiums Cocoa Producers completed and programme of intervention designed and being implemented.

Map 4

**Fond Watershed –
Vulnerability Map & Multi-Hazard**



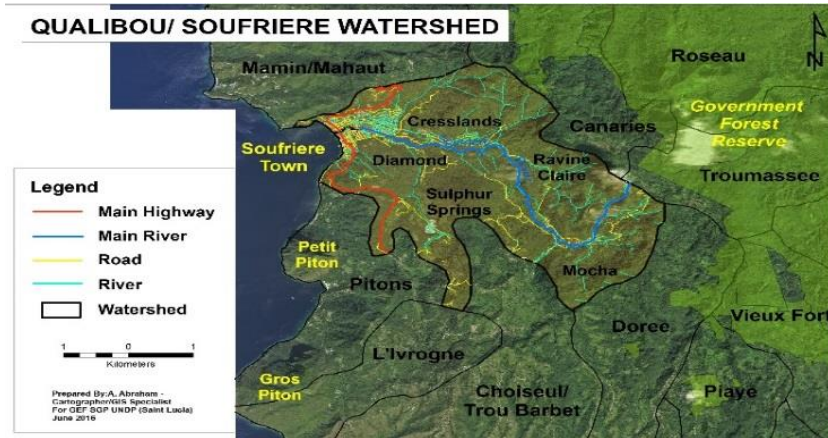
Community Resilience Workshop



Above: Group Work on Indicators

Left: Community Mapping

**4.1.3 Soufriere Landscape:
Map 5**



Currently, there are seven (7) projects being implemented within the Soufriere Landscape. Of that total, there (3) IW, one (1) BC, and three (3) LD, all of which commenced in 2017. Two (2) IW projects were completed during the reporting period. At December 2017, the total investment in the Soufriere Landscape was US\$710,227 (XCD\$1,917,613).

The results documented during 2017 were as follows:

- Significant deterioration in water quality in the Soufriere River and the Coastal Zone confirmed.
- The extent of pollution from pig pens and the impact on water quality is now known in the Ravine Claire Area.
- Sustainable livelihoods for young women significantly improved, through the funding and expansion of an indigenous fruit smoothie business to the Sulphur Springs Park and the Hummingbird Beach. It is expected that very soon, the group will be introducing mobile smoothie carts in Soufriere Town.



**Fruitage Jeunesse Ladies
(Sulphur Springs Park)**

- Mechanism established for greater collaboration among the many government, CSOs and donor organisations working in the Soufriere Landscape. However, it needs more support and acceptance if it is to be successful.
- Grants given to groups to do the following:
 - Build their capacity;
 - Address invasive species in the coastal zone (Lion Fish);
 - Increase community participation and benefits from the Gros Piton Nature Trail and to improve overall site management.

- Funding approved to help determine the suitability and likelihood of establishing an Agro-tourism Park in the Upper Watershed of Soufriere.
- Increased advocacy by the SMMA has resulted in donors committing to assess the pollution challenge in Soufriere (French and German bi-lateral agencies).

4.2 Community Based Adaptation Projects: We are presenting the results from CBA projects here separately, because of their relevance to SIDS in this highly vulnerable part of the biosphere.

Over the last four years, GEF SGP UNDP funded five (5) projects as presented in Table 7.



VRA Session in La Pointe, Mon Repos.

**Table 7
CBA Projects in Saint Lucia¹⁵**

Community	Focus	Planning Grant	Full Grant	Total Investment (US\$)
La Pointe, Morne Repos (Micoud)	<ul style="list-style-type: none"> • Food Security • Rain Water Harvesting • Organic Principles and approaches. 	-	✓	64,304
Bouton (Soufriere)	<ul style="list-style-type: none"> • Rain water harvesting for domestic use. 	✓	✓	102,237
Laborie (Fishermen's Group)	<ul style="list-style-type: none"> • Potable Water Production (environmentally sustainable desalination) 	✓	✓	45,486
Farmers with Disabilities Beekeeper Association (Choiseul)	<ul style="list-style-type: none"> • Research into natural beekeeping. (building resilience in bee hives) 	✓	✓	191,780
Laborie Development Foundation	<ul style="list-style-type: none"> • Building resilience in urban settings (Land Use & Planning Guidelines) 	✓	✓	91,296
Total (US\$)				495,103
Total (XCD\$)				1,336,778

These projects have yielded many results as follows:

- Over 25 farmers trained in CC mitigation measures, rain water harvesting systems, and sustainable agricultural methods. Production had doubled and tripled for farmers in La Pointe.

¹⁵ Funded by AusAid.

- Capacity of community group increased and their meeting place constructed and refurbished.
- 32 households in Bouton have secure rain water harvesting systems producing over 26,000 gallons of water for the use of approximately 128 persons. A secure water supply was established which can last up to 67 days in the case of a disaster (assume 3 gallons of water per person per day).



**Rain Water Harvesting System
(Bouton, Soufriere)**

- Laborie fishers have tested and proven that desalination can be done using cheap energy and producing zero environmental impact. The initial mobile desalination, solar driven and brine neutralising system prototype has a production capacity of over 1514 litres per day with a capacity to reach over 30,000 litres per day with modifications. As we were completing this report, we received the good news that the technology will be implemented in the Pacific Island of Nauru using a second generation system.



**Mobile, Solar Driven and Brine Neutralizing
Desalination System**

- The Farmers with Disabilities Beekeeping Association (FDBA) went from a small fledgling group to a major producer of honey in Choiseul.
- Twelve members of the FDBA trained in natural bee keeping,
- The Laborie Development Foundation has produced the first community led Land Use Plan and Guidelines for the sustainable development of Laborie. The plan is now final and will be presented to the Minister of Planning very soon.

An elaboration of these CBA results will soon be captured in an independent case study of Projects in Saint Lucia. Notwithstanding these achievements, the question which must be asked is – are these communities more resilient than before in the specific risk area identified? Table 8 is a summary of the VRA scores for each of those projects and the commensurate community.

Table 8
VRA¹⁶ Scores for CBA Projects

Community	Focus	VRA Scores		
		Baseline	Mid-Way	End of Project
La Pointe, Morne Repos. Micoud (Laborie)	<ul style="list-style-type: none"> • Food Security • Rain Water Harvesting • Organic Principles and approaches. 	2.6	2.61	4.13
Bouton, (Soufriere)	<ul style="list-style-type: none"> • Rain water harvesting for domestic use. 	2.5	2.27	2.50
Laborie (Fishermen's Group) (Laborie)	<ul style="list-style-type: none"> • Potable Water Production (environmentally sustainable desalination) 	3.15	2.22	3.40
Farmers with Disabilities Beekeeper Association (Choiseul)	<ul style="list-style-type: none"> • Research into natural beekeeping. (building resilience in bee hives) 	3.25	2.43	3.21
Laborie Development Foundation (Laborie)	<ul style="list-style-type: none"> • Building resilience in urban settings (Land Use & Planning Guidelines) 	2.69	2.58	3.23

Without focusing on the limitation of this methodology, we can confirm that these results demonstrate the following:

- (i) Community resilience is a process and not a one-time event or project;

¹⁶ A participatory methodology which lead communities in reflecting and reviewing their level of resilience. The process usually takes 1.5 to 2 hours, and is based on scoring by the participants after assessing the risk and scoring their level of readiness. The four (4) categories of questions

- (ii) Community resilience cannot be determined or achieved by focusing on one risk, because it is a multi-variate challenge;
- (iii) Communities usually over-estimate their resilience, until they begin to understand the extent of the risk and impacts from various risks, which results in the decline of scores; (1st to 2nd scores); and
- (iv) Significant changes in perception occurs by the end of the project, because there is better understanding and development of capacity. An assessment of the final score also identifies areas for continued assistance, if communities are to build on their achievements and not regress (2nd to 3rd Scores).

There are many other interpretations and lessons learned, which will be presented in a published case study later in 2018. What is clear is that this methodology if systematically and consistently used, can give an indication of the degree of reduction of vulnerability in an area for a specific risk or group of risks, and further, point to where the major interventions are required immediately.

4.3 Thematic Projects: Projects outside the three aforementioned landscapes, were selected based on their fit to four themes, and their level of innovation and potential contribution to change. The four themes are as follows:

- **The Apiculture Production Chain:** use of sustainable production, harvesting and marketing methods.
- **Sustainable Agro-processing:** agro-processing methods which means methods with minimal to zero environmental impacts, which includes zero carbon footprint.

are as follows: (i) How does the selected risk presently affect the community? (ii) If the duration or impact of the risk is doubled, how will the community cope? (iii) What are the means of management of the risk in the community? and (iv) What is the probabilities of continuity of strengthening community resilience after the project ends?

- **Agro-forestry and Preservation of River Banks:** use of methods which respects the diversity of species in order to ensure sustainability and resilience. That is, using a diversity of species.
- **Alternative Energy in Sustainable Production Systems:** Reducing carbon footprints in small and medium enterprises at the community level, with a benign impact on the environment.

Five projects were approved under these themes, amounting to an investment of US\$183,458 (XCD\$495,337). The projects have not started to produce results yet, but their potential can be gleaned from the following:

- Reforest and manage 9.2 Km (5.7 miles) of the Roseau River Bank over two years and build organizational capacities;
- An environmental assessment of over 3 km of the Joyeaux River and the development of a community intervention plan;
- Establishment of the first fully solar aquaponics production facility which will also serve as a teaching facility and a community tourism site in the village of Bois d'en, Choiseul.
- Establishment of the first fully computerized, solarized and viable greenhouse system as a climate resilience system in the community of Babonneau.

4.4 Other Projects: These are ongoing projects from OP 5 that are located outside the landscapes, which are still being implemented, with a few only recently ended. There are twenty (20) such projects creating impacts in many parts of the country. Of that total, six (6) were completed in 2017 and others are ongoing. The total investment of the completed projects was US\$639,593 (XCD\$1,726,901). The specific results of these projects are as follows:

- Vertical aquaponics facility established and rain water harvesting system improved at the Boys Training Centre with one successful

production run. We expect this facility will be used for training and to reduce the cost of feeding the wards at the facility. We are however concerned with the long term management of the facility.

- In the village of Laborie, a marine management project has produced the following outputs:
 - (i) A plan for the integrated management of the Laborie Bay that includes a vision and objectives; specific management regulations and guidelines; and specifications for all facilities;
 - (ii) Recommendations towards and preliminary design of an institutional arrangement that ensures that local stakeholders are involved;
 - (iii) A detailed plan for the development of village yachting, and implementation of the plan for the design and specification for mooring buoys, navigation buoys and lightening system, installation of all facilities, and design or a management system; and
 - (iv) A more functional jetty that now supports tourism and fishing activities, with a new dinghy jetty and solar-powered lights.
- A fully solarized, equipped, nearly completed (80%) sea moss factory is now serving 130 farmers in the region around Praslin.
- In the Northern Hills of Vieux Fort, the Belle Vue Kitchen Garden Group completed a project with the following results:
 - (i) 3 acre farm established with a nursery, rain water harvesting system and a pond for water storage;
 - (ii) Community sensitized and informed through the use of a pageantry format – Miss Organic Pageant;

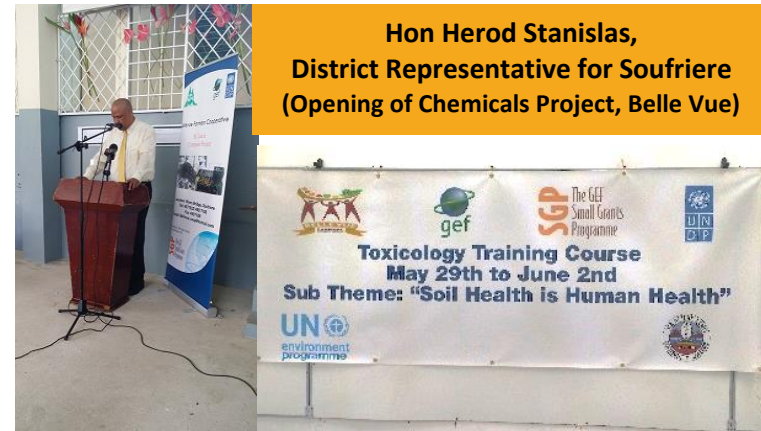
- (iii) One member received recognition and a scholarship for training in Japan (with funds from the Japanese Government) in composting. This lady is now is a resource person to the group and surrounding farmers and schools.



**Belle Vue Kitchen Garden Group
(The Ladies of Northern Vieux Fort)**

- In the Chemicals and Waste Focal Area the following was achieved through the work of the Belle Vue Farmers Cooperative:
 - (i) 122 persons (from customs officers to housewives) informed and educated on the harmful effects of toxic pesticides, (38 persons received their online certificate from the GEF SGP in POPs);

- (ii) At least 16% of the participants (20 persons) have reduced the use of toxic pesticides and started to utilize non-toxic pesticides (mainly the housewives);
- (iii) At least 15 farmers have reduced on the use of toxic pesticides and are using more non-toxic pesticides and organic matter and compost, particularly vegetable farmers;



**Hon Herod Stanislas,
District Representative for Soufriere
(Opening of Chemicals Project, Belle Vue)**

- The Saint Lucia Fisherfolk Cooperative and Algas Organics established a partnership which has produced Saint Lucia's first bio-stimulant factory based on the invasive sargassum seaweed whose efficacy has been proven scientifically. Exports out of Saint Lucia has begun¹⁷.
- 60 farmers using the Algas Plant Tonic in Saint Lucia by the end of the project.
- In the community of Choiseul a renewable energy cluster has been established made up of ten (10) middle income households.

Mercury, Cadmium, Lead and Arsenic.

¹⁷ As we were finalising this report we received the very good news from CAPHA that the Algas formulation has low and insignificant amounts of

With interconnection completed for 6 of the 10 households, electricity charges have declined between 19% and 112% and KWh usage declined by a total of 32% between February and March.

For three of the beneficiaries which we have a minimum of two months data for, the decline in Kwh was collectively 142.72 Kwh which is equivalent to 174.40 Lbs of CO₂¹⁸ not reaching the environment. In one year the savings will be better known.

What is innovative about this project, is that 50% of savings will go into a community foundation every month for design and implementation of projects, which will benefit the poorer people in the community.



A Beneficiary Sustainable Energy Cluster (Choiseul)

- 40 persons (37 women and 3 men) from the Saint Lucia Network for Rural Women trained in organic farming and chemical free food, while the women also learned to improve their cooking skills with indigenous fruits and vegetables.
- A Children's booklet and Instructional Manual for teachers was published on *eating healthy to be healthy* under the Chief Tree Brand. 3300 booklets were printed and circulated to pre-schools in Gros Islet, Babonneau, Castries and Micoud. Statistical data proves the following: Children's like for fried foods, sweets and soft drinks fell by 25%. 18% and 14% respectively.
- The remaining 13 projects are incomplete and in the areas of biodiversity conservation (turtles and endemic snake); greening of the floral industry; reduction in the use of GMOs; and the promotion and use of cassava. We expect these projects will generate many positive results by the end of 2018.

5.0 Contribution to Sustainable Development Goals:

The 17 SDGs are quite broad and yet with specific indicators of measurement. Space will not allow us to elaborate, except to state that every project approved and completed, contributes to the SDGs in a positive way. The projects implemented contributed significantly to Goals 1 to 17. In many respects, the SGP goal can be restated as creating resilient communities through one or more projects at a time, which means contributing significantly to the SDGs.

6.0 Challenges & Actions:

There are **two (2) major challenges** we face and cannot seem to overcome, because to a major extent GEF SGP depends on others to perform. These are the **Absorptive Capacity (AC)** of CSOs, and the **Water Quality (WQ)** on the West Coast of Saint Lucia. AC in our experience is affected by three main factors as follows:

<http://carbonfund.org/how-we-allocate/https://www.ecosoch.com/calculate-your-carbon-foot-print/>

- (i) the capacity and capability of members of an organization, which includes their willingness to learn and re-learn to become more efficient and effective;
- (ii) the institutional support in a country, which also refers to the speed and efficacy of that support; and
- (iii) the availability of, speed of, and quality of paid and/or volunteer support at the community and national levels.

GEF SGP strongly believe that if these constraints can be addressed, the impacts of grant projects through CSOs can increase by more than 500% within three years.

Noting these AC challenges as early as 2013, GEF SGP proactively took the following initiatives:

- (i) *convened meetings and made presentations to extension and field officers from several Government Departments* to inform them of the programme and the financial and technical assistance available. From this effort, two officers responded and worked with GEF SGP UNDP to bring new projects to their communities;
- (ii) *approached the SALCC in 2013 and 2014 and crafted and signed a communique at the highest possible level with the Board of Management and in addition gave SALCC a grant to establish a research (all areas of knowledge) and training programme in 2015.* To date, the organization in the form of VALIRI has been incorporated, but the inertia has been overbearing and very disappointing. We are still awaiting the conclusion of this first project to upscale the project to our Special Projects Window and to attract other donors to the table. We need to find a way to overcome the organization's slumber or let it die and move on to try other ideas; and

- (iii) *Internally, steps were taken to rationalize the processing and response time to CSOs, which has decreased the disbursement time to CSOs that have met all reporting requirements as per contracts.* In addition, with the full computerization of the financial system, cheques are written right here in Saint Lucia and no longer from Barbados or New York.

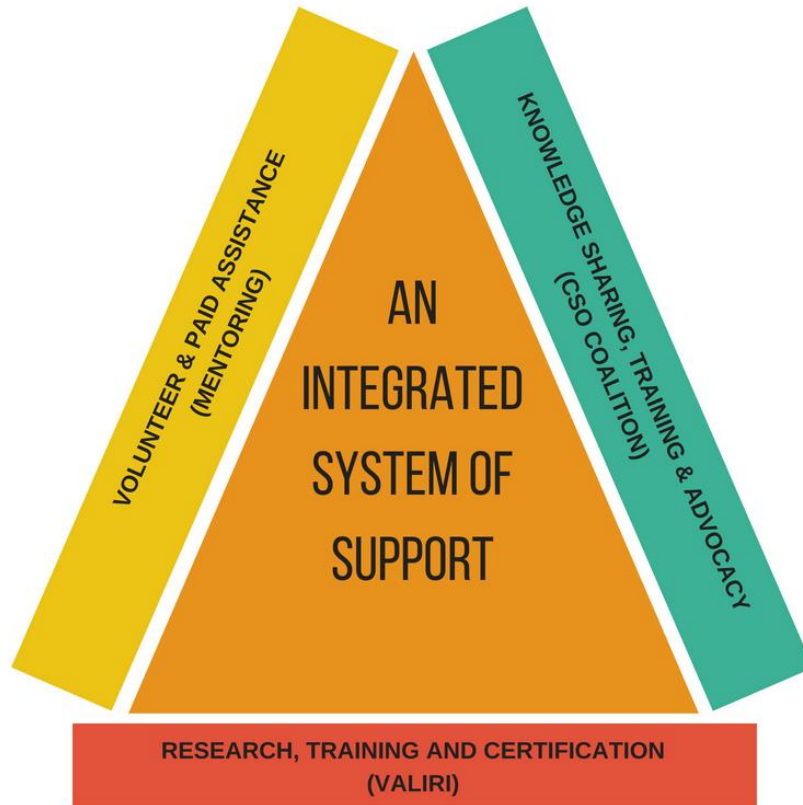
Notwithstanding these initiatives, the very slow progress made to establish a ***national mentoring programme for SD and the delays in approving the incorporation of the Coalition of CSOs***, have become fetters to progress. It is becoming apparent that the ***Triangle of Support for Capacity Development*** GEF SGP UNDP is trying to establish in Saint Lucia, could remain an idea with wings but no landing gear (Figure 4).



Working Group on Capacity Development for CSOs

Figure 4

Triangle of Support for CSOs



The second major challenge we face is the alarming situation with respect to water quality in the coastal zone. This situation requires a national and community effort for a sustainable solution. GEF SGP concluded that a ridge to reef approach is needed and decision makers and takers must understand the realities of poverty, livelihoods, and the interest of the nation as one integrated matrix. For example, in the Soufriere Watershed where we have already invested well over US\$289,277 (XCD\$781,048) and are planning to invest another US\$377,000 (XCD\$1,017,900) by May 2019 and more in GEF 7, the water quality is profoundly appalling.

To address these challenges, GEF SGP has recommended the establishment and the formalisation of a *Referent Organisation* which recognises the comparative advantages of all the organisations, both foreign and local, working in the Soufriere Watershed, but creates a mechanism to share ideas, avoid duplication and competition, and work towards results. GEF SGP UNDP is willing to give some basic initial funding and technical assistance to such an entirety, if there is support from the GOSL. If the support is forthcoming, GEF SGP recommends that such an organisation is chaired by the District Representative and a credible CSO (selected by CSOs in Soufriere), with the Chief Physical Planner as the primary technical officer. GEF SGP would also work with the GOSL to mobilise additional funding from multilateral agencies in addition to the significant amount which is already there from the Big GEF, the Small GEF and GIZ. There is an urgency for action, and in the words of the Manager of the SMMA, “we need action now!”



**Community Discussions with workshop participants
(Pollution in the coastal zone, Baron's Drive, Soufriere)**

7.0 Partnerships: The GEF SGP UNDP work in Saint Lucia would not be possible without assistance, support and many partnerships. GEF SGP wishes to thank the GOSL, in particular the Ministry for Education, Innovation, Gender Relations and Sustainable Development; the Ministry for Agriculture, Fisheries, Physical Planning, Natural Resources and Co-operatives; and the Ministry of Equity, Social Justice and Empowerment, for their continued support.

GEF SGP must also recognise its significant partnership with IICA. The technical assistance from IICA has been sustained and very

¹⁹ "unofficial interval of geologic time, making up the third Worldwide division of the Quaternary **Period** (2.6 million years ago to the present), characterized at the time

valuable to CSOs in Saint Lucia. GEF SGP looks forward to reviewing and improving that partnership for the benefit of Saint Lucian CSOs.

GEF SGP has also started to develop a partnership with the OECS to extend options for the participation of CSOs in sub-regional governance and programming. Towards that objective, GEF SGP UNDP presented for the first time at the OECS Ministers of the Environment Meeting in Grenada in 2017 and later started discussions on collaboration.

Finally, our partnerships with over 54 CSOs in designing and implementing projects must be considered an achievement. Without their initiative, sustained support and commitment to change, our programming in Saint Lucia would not be successful. GEF SGP looks to more CSOs joining the programme to make significant positive differences in Saint Lucia during 2018 and beyond.

8.0 Lesson Learned: There is one lesson we have learned in the last year, *id est*, ***without accelerated research and innovation*** in Saint Lucia, our communities and our nation will find it very challenging to become resilient. We therefore appeal to VALIRI to address the inertia from within and to work more consistently with GEF SGP UNDP to establish an incubator for research, adaptation and innovation, which are the core vectors for national and community resilience in this *Anthropocene Epoch*¹⁹.

9.0 Conclusion: This 2017 report demonstrates the value of the GEF SGP UNDP to the People and GOSL. It shows what is possible and highly probable, if we marshal our intellectual and

in which the collective activities of human beings (Homo sapiens) began to substantially alter Earth's surface, atmosphere, oceans . . . "

<https://www.google.com/search?q=What+is+the+Anthropocene+Period%3F&sa=X&ved=0ahUKEwiYk52V2oXbAhXNvVMKHxDIDwYQzmcISg&biw=1536&bih=735>

financial capital for the benefit of all. The spark of brilliance and achievements

we see everyday among our young people, in particular, gives us great hope.

It is clear to GEF SGP that in order for Saint Lucia as a nation to become resilient, it needs a more comprehensive assessment and development of capacities and capabilities, and a more thorough study and inventory of natural resources. In addition, CSOs and decision makers and takers must become more proactive and assertive in planning the future, including knowing what should be accepted and will be rejected spatially in Saint Lucia. Perhaps the nation needs to define RESILIENCE from a Saint Lucian perspective, at the community and national levels.

GEF SGP UNDP looks forward to the challenges of the future.



**National Coordinator and Grantee with OECS Ministers of the Environment and the Director General of the OECS.
(Grenada 2017)**





COMMUNITY ACTION

GLOBAL IMPACT

GEF SGP ST LUCIA

P.O. Box 8201 Choc,

Castries LCO2 8206

Saint Lucia

Tel: (758) 452 -4900 (Office)

Local Website: <http://gefsgpundpsaintlucia.org>

Global Website: <http://sgp.undp.org>